

Series
541-ISO

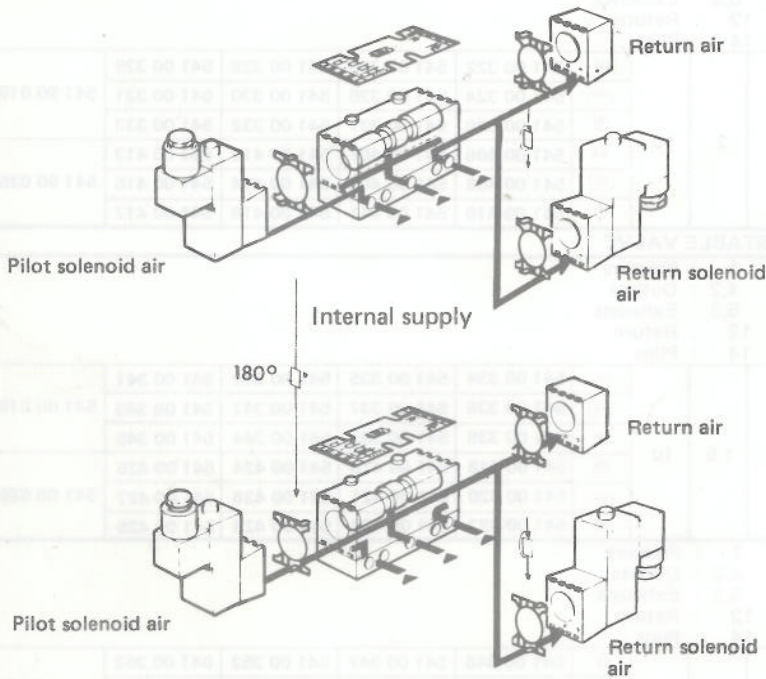
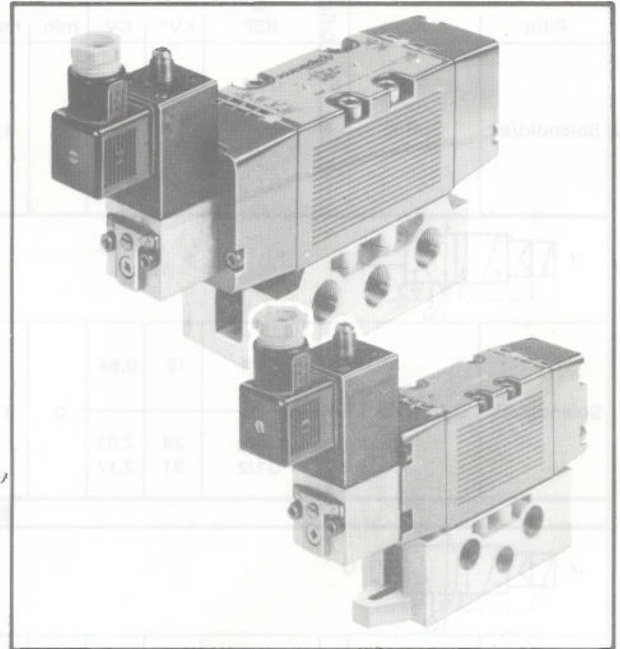
SPOOL VALVE (MULTI-FUNCTION)

solenoid/air operated
Ø orifice 6 and 12 mm — subbases 1/4" to 1/2" BSP

5/2
ports / positions

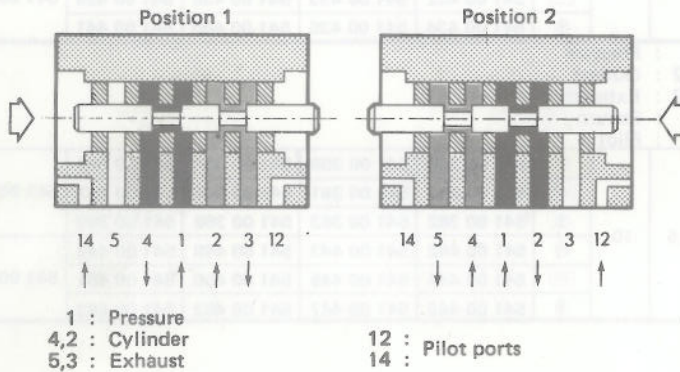
KJy-301-1.3
301-2.4
301-6.8
301-5.7
301-9
301-10
301-11

VALVE FUNCTION
SOLENOID OPERATED
Separated supply



AIR OPERATED
(see leaflet PNE 8020)

VALVE BODY



GENERAL SPECIFICATIONS

- FLUID : Air or neutral gas either dry or lubricated
- PORTS : subbases 1/4", 3/8" and 1/2" BSP
- BORE : 6 and 12 mm
- FLUID PRESSURE : 0 to 12 bars
Vacuum 10⁻¹ tor
- PILOT PRESSURE : 1.5 to 10 bars
- TEMPERATURES :
FLUID : -10°C to +60°C
AMBIENT : -10°C to +60°C
- LIFE : Over 10 million cycles with filtered dry or lubricated air
- PILOTS : solenoid, air, spring or differential
- SUBBASE - Ø6 : ISO 5599 - 01 Size 1
AFNOR NFE 49080
- Ø12 : ISO 5599 - 01 Size 2
AFNOR NFE 49080