

Spark Detection & Extinguishing Systems

Parts Catalog

CC5000 and CC7000 Series



GreCon®

Spark Detection & Extinguishing Systems

GreCon Control Consoles receive and process signals from sensors then automatically activate individually controlled countermeasures including: extinguishment, deluge, abort, or automatic machinery shutdown. Console enclosures are IP55 (NEMA 12), suitable for severe industrial surroundings. Modular construction. Menu display all functions and test procedures for the console, sensors and extinguishment devices, and a recallable event memory can be displayed or exported. Factory Mutual (FM) Approved.



CC5000 and CC7000 Control Consoles

Model	Zone Capacity	Cabinet Style	Extension Possibility	Part Number
CC5001	1	1	No	58161001
CC5002	2	1	No	58161002
CC5004	4	1	No	58161004
CC5016	16	2	Yes	58161016
CC5036	36	3	Yes	58161036
CC7004	4	1	Yes	581611
CC7016	16	2	Yes	581623
CC7036	36	3	Yes	581626

CC5000 and CC7000 Extension Cabinets

Additional zone capacity may be achieved by adding extension cabinets. A maximum of two extension cabinets with any master console except 5001, 5002, and 5004.

Model	Zone Capacity	Cabinet Style	Part Number
CC5020	20	2	58161020
CC5040	40	3	58161040
CC7020	20	2	5816235
CC7040	40	3	5816265



Operation and Display Panel

5816837
5816836

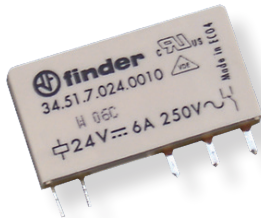
Operation panel
Touch screen



KKSI 9/3 Analog Input Module

5919010

KKSI 9/3 analog input module



Relay

56461763.1
56962763.2

24 volt dry contact relay
Relay socket

Alarm Devices

5584118
558412
5584111

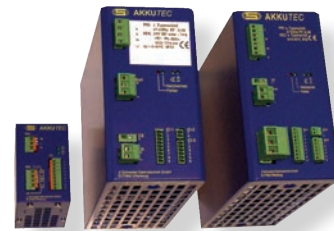
Strobe light & alarm horn unit 24v
Alarm horn 24v
Strobe light 24v



Modules

59190101
59190201
59190202
59190301

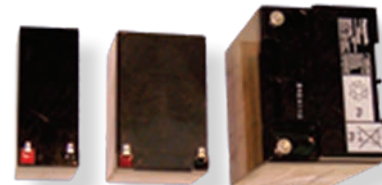
Master module
Line module version 1
Line module version 2
Combi module



Uninterruptible Power Supply

558780
558781.us
558782

Power supply for cabinet 1
Power supply for cabinet 2
Power supply for cabinet 3



Batteries

558141
564598
5645986

12 volt battery for cabinet 1
12 volt battery for cabinet 2
12 volt battery for cabinet 3

Interfaces

5874933 - CC7000
5874934 - CC5000
5874935 - CC5000-7000

Configuration software
Tool software
Printer software

Detection

GreCon Sensors contain photo diode elements which detect even the smallest spark's infrared radiation. Fiber optic cables and sensors are available for high temperature applications up to 1200° F. An internal test light validates the electrical circuitry and wiring. IP 65 (NEMA 4) enclosures. Electronics are shielded against UHF, VHF, or other interference. Sensors are easily installed or removed with mounting adapters.



FM 1/8 Sensor

Low temperature/pressure application sensor for the detection of infrared radiation in the 800 - 1100 nm range.

581540 FM 1/8 sensor
581565 Mounting adapter



DLD 1/8-A Daylight Sensor

Low temperature application sensor for the detection of infrared radiation in the 1650 - 3000 nm range where ambient light is present.

581591 DLD 1/8-A sensor
581591-L DLD A-LL daylight high temp sensor
581397 Mounting adapter
581590 HPD 1/8
558955 1/2 meter fiber optic cable



FM 3/8 Sensor

High temperature/pressure application sensor for the detection of infrared radiation in 800 - 1100 nm range. Sensor is linked to the duct via 3 fiber optic cables.

581550 FM 3/8 sensor
558956 1 meter cable
558957 2 meter
5589575 3 meter cable
581398 Mounting adapter
558627 Cable lens cover



TM 1/8 Type II Rate-of-Rise Sensor

Heat sensor for early detection of temperature rise or rate of rise caused by fire.

5815312 TM 1/8 sensor
581519 AE/71 interface wall mount
5815195 AE/71 interface DIN rail mount
5815375 Mounting adapter
404010 Sensor probe 140° F
404012 Sensor probe 190° F
404014 Sensor probe 225° F
404022 Sensor probe 450° F
5815196 AE91 Interface card 5000/7000



Kelex 1/8 Terminal Box

Junction box for connecting FM Sensors to console. Provides individual 12/24 vdc sensor testing.

5815802

Kelex terminal box

Sensor Heat Shield Mounting Bracket

For mounting FM 3/8 Sensor and Kelex 1/8 Junction Box to the duct. Provides a heat shield for high temperature applications.

486851

Sensor heat shield



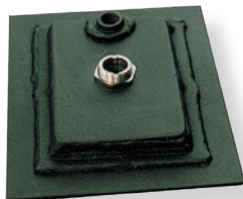
Kelex Mounting Plates

558694

Kelex 1/8 mounting Plate for FM 1/8

5586971

Kelex 1/8 mounting Plate for FM 3/8



Air Purge Plenum

For use with FM 1/8, FM 3/8, and DLD 1/8A sensors in applications where material buildup can blind sensor lens.

404127

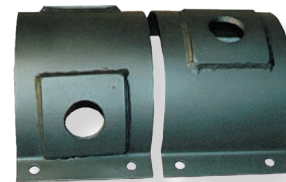
FM 1/8 sensor plenum

404130

Cable air plenum

404126

DLD 1/8A plenum



Mounting Band

For mounting FM 1/8 and FM 3/8 Sensors to small diameter or heavy wall pipe.

404290**

Sensor mounting band

404111

Sensor mounting sleeve w/nut

404255**

Cable mounting band

404107

Cable mounting sleeve w/nut

** Pipe Diameter

Extinguishing

Nozzles are pressure activated and contamination free. All extinguishing assemblies are available with either stainless steel or brass nozzles. Stainless steel mounting adapters allow for easy installation and removal.

Extinguishing Assemblies

1-3 nozzle extinguishing assemblies include connecting pipe, shut off valve, valve assembly, plug, coil (12, 24 VDC), nozzle(s), and nozzle mounting adapters.

486002	LS-1-BR 12V
486004	LS-1-BR 24V
4860004B	LS-1-BR 24V (band)
486014	LS-1-SS 24V
486016	LS-1-SS 12V
486016B	LS-1-SS 24V (band)
486006	LS-2-BR 12V
486008	LS-2-SS 24V
486018	LS-2-SS 12V
486020	LS-2-SS 24V
486010	LS-3-BR 12V
486023	LS-3-SS 12V
486029	LS-1-SS 24V UHS



Model Designation
 First number = number of nozzles
 BR = brass nozzles
 SS = stainless steel nozzles
 Last number = DC voltage
 band = no mounting adapter



Extinguishing Nozzles - K45

561523	Brass
561522	Stainless steel
581429	Nozzle mounting adapter
56151911	UHS stainless steel
58142953	UHS SS mounting adapter



Nozzle Mounting Band

For mounting nozzle to small diameter or heavy wall pipes.

404280**	Nozzle mounting band
404184	Nozzle mounting sleeve w/nut

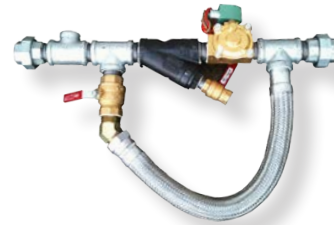
** = pipe diameter



Extinguishing Spare Parts

599718	1" solenoid valve, Y-strainer & O-rings
599712	1" solenoid valve only
5914018.22	Y-strainer screen only
56146172.12	12V Solenoid clip-on coil
56146172.24	24V Solenoid clip-on coil
5614592	Coil plug
561461725.24	24V high pressure clip-on coil
561511	SIKA VHS-05-M flow switch (1/2" NPT connection)
486438	SIKA VHS-06-M flow switch (1" NPT connection)
56146173	Valve w/24V coil UHS

Extinguishing & Deluge



Freeze Protection

Insulation jackets protect the extinguishing devices against freezing when used in conjunction with heat tape.

404400	EJ/0 jacket deluge
404402	EJ/1 jacket LS1
404404	EJ/2 jacket LS2
404406	EJ/3 jacket LS3

Deluge Valve Assembly with Manual By-Pass

486169	1"	120VAC ASC
486170	1 1/4"	120VAC ASC
486171	1 1/2"	120VAC ASC
486173	2"	120VAC ASC
486175	2 1/2"	120VAC ASC

Deluge Spare Parts

404195	Brass Nozzle K65
404196	Stainless steel nozzle K65
581429	Nozzle mounting adapter
440724	1" metal braided by-pass hose
440728	1 1/4" metal braided by-pass hose
440725	1 1/2" Metal braided by-pass hose
440736	2" metal braided by-pass hose
440738	2 1/2" metal braided by-pass hose
561504	WP-1 water flow switch
484308	1" Y-strainer & screen
484305	Y-strainer screen only



Deluge Valve Assemblies

Deluge solenoid valve assemblies for 3/4 to 2 1/2". Assemblies include solenoid valve, "Y" strainer, and ball valve.

486269	3/4"	24VDC ASC
486270	1"	24VDC ASC
486271	1 1/4"	24VDC ASC
486272	1 1/2"	24VDC ASC
486274	2"	24VDC ASC
486275	2 1/2"	24VDC ASC
24V DC power supply required		
486259	3/4"	120VAC ASC
486262	1"	120VAC ASC
486263	1 1/4"	120VAC ASC
486264	1 1/2"	120VAC ASC
486266	2"	120VAC ASC
486267	2 1/2"	120VAC ASC
120VAC power supply required		

Deluge Valves Only

599712	1"	Valve BJ
5614611	1 1/4"	Valve BJ
56146132	1 1/2"	Valve BJ
56146142	2"	Valve BJ
486230	3/4"	24VDC ASC
486232	1"	24VDC ASC
486234	1 1/4"	24VDC ASC
486236	1 1/2"	24VDC ASC
486240	2"	24VDC ASC
486242	2 1/2"	24VDC ASC
486200	3/4"	120VAC ASC
486204	1"	120VAC ASC
486208	1 1/4"	120VAC ASC
486212	1 1/2"	120VAC ASC
486220	2"	120VAC ASC
486224	2 1/2"	120VAC ASC

Booster Pumps and Abort Gates

GreCon water pressure booster pumps provide increased water pressure and flow rates for extinguishing operations. Standard booster pumps are designed to increase plant pressure up to 65psi. Non-standard sizes available on request.



Pressure Booster Pump Spare Parts

System Parts

486402	50 or 80 gal. tank bladder (STA-Rite or PRO-Source tank)
486404-1	80 gal. Elbi tank bladder
486407	80 gal. PRO-Source tank w/bladder
405243	Pressure gauge 0-60 psi
486379	Pressure relief valve
486360	2"Ø spring check valve
486412	5HP x 460V pump motor
486413	5HP x 575V pump motor
486414	7 1/2HP x 460 pump motor
486415	7 1/2HP x 575V pump motor

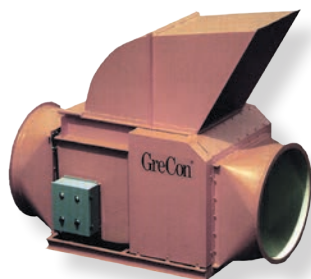
B1-1/2 TPMS Pump Parts

486430	Mechanical seal
486431	Impeller
486432	Volute Gasket
486433	Impeller washer
486434	Shaft sleeve
486435	Impeller screw
486436	Key
486437	Retaining ring

GWS 3/32 Pump Spare Parts

486411	3HP x 460V pump motor
486439	Mechanical seal
486440	2nd stage impeller
486441	2nd stage impeller seal
486442	Intermediate chamber
486443	1st stage impeller
486444	1st stage impeller seal
486445	Suction chamber

GreCon Fail-Safe abort gates exhaust hazardous air flow from the ducting. Activated by the sensors, a spring-loaded gate closes in less than 500 milliseconds. NFPA 664 standard compliant for recycling exhaust air.



Abort Gate Spare Parts

440020	RU-1 rectifier
440810	Electro magnet
496275	Gasket rope
440910	6" Minipak actuator 12-22"
440913	12" Minipak actuator 23-28"
440911	6" Superpak 29-36"
440912	12" Superpak actuator 37-42"
440920	18" Superpak actuator 43-60"
496201	EPDM rubber
440330	Limit switch
440332	Limit switch arm

