

NOTICE

THIS DRAWING IS THE PROPERTY OF QUALITROL COMPANY LLC AND IS LOANED ONLY ON THE CONDITION THAT IT WILL BE USED TO FACILITATE THE PURPOSE FOR WHICH INTENDED AND NOT BE REPRODUCED, COPIED OR OTHERWISE DISPOSED OF, AND IS NOT TO BE USED IN WHOLE OR PART FOR FURNISHING INFORMATION RELATIVE TO THE MAKING OF DRAWINGS, PARTS APPARATUS OR PARTS THEREOF, EXCEPT BY WRITTEN ORDER FROM QUALITROL COMPANY LLC.

MODEL NO. 909-300-01

NOTES: (UNLESS OTHERWISE SPECIFIED)
 1) UNIT IS SHOWN WIRED FOR 120 VAC.
 SEE SCHEMATIC TABLE FOR DIFFERENT VOLTAGE INPUTS.

2) **TERMINAL BLOCK:**
 SCREW: #6-32 CADMIUM PLATED STEEL
 RATING: UL 20A @ 600V.
 WIRE RANGE: 12-22 AWG

3) **STANDARD MODEL CONTACT RATINGS: (MANUFACTURER)**

VOLTAGE (VOLTS)	MAKE (AMPS)	CARRY (AMPS)	BREAK (AMPS)	
			RESISTIVE	INDUCTIVE*
120 AC	30	8	8	6.5
240 AC	15	8	8	3.5
24 DC	8	8	8	3
48 DC	0.58	2	2	1
125 DC	0.22	1	0.22	0.22
250 DC	0.11	1	0.11	0.11

*WHERE $\frac{L(\text{HENRYS})}{R(\text{OHMS})} \leq 0.70$

CONTACT RATING: VDE 0435, 0631, 0700, 0860, UL508, 873, CSA 22.2 No.14

***TRIP CONTACT OUTPUT IS COMPRISED OF (2) CONTACTS EACH WITH THE RATINGS LISTED IN PARALLEL.

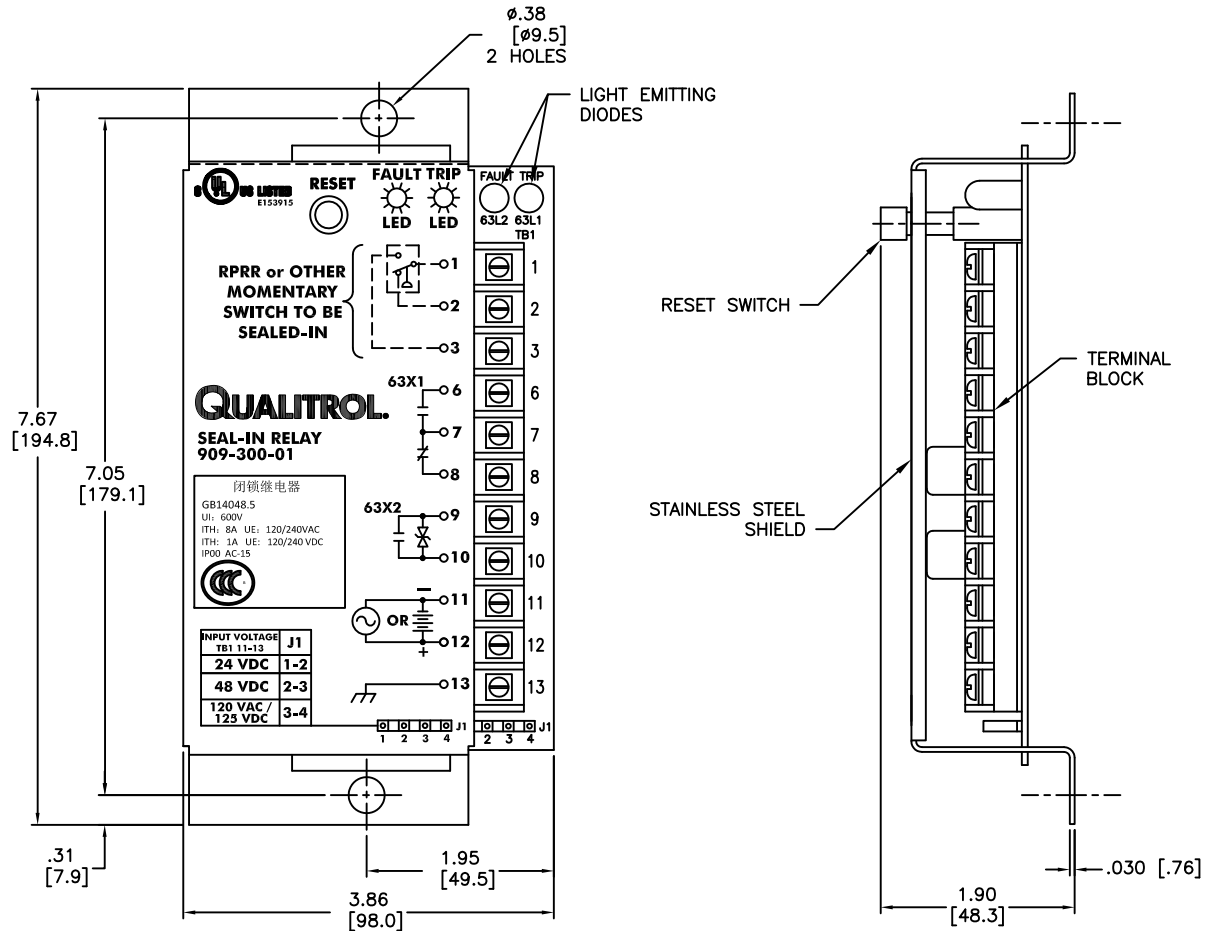
TRIP: ¼ HP @ 120/250 VAC
 8 A @ 30 VDC RESISTIVE
 8 A @ 250 VAC GENERAL USE
 B300 & R300 PILOT DUTY

ALARM: ¼ HP @ 125/250 VDC
 8 A @ 30 VDC RESISTIVE
 8 A @ 250 VAC GENERAL USE
 B300 & R300 PILOT DUTY

4) **DIELECTRIC STRENGTH:**
 2500V: TB1-1 THRU TB1-12 TO TB1-13 (GND)

5) **AMBIENT TEMPERATURE:**
 -49°F to 104°F (-45°C to 40°C)
SURROUNDING AIR TEMPERATURE:
 -49°F to 158°F (-45°C to 70°C)

6) PRODUCT TESTED AND FOUND SUITABLE FOR UL508 AND CAN/CSA C22.2 NO. 14-13 ORDINARY LOCATIONS.



LET	DATE	ALTERATION	C.N.
-	6-28-13	UPDATE "CUL" MARK TO LISTED	31480
-	3-14-13	UPDATED ARTWORK ADDED CCC	30538

QUALITROL

DIMENSIONS AND TOLERANCES IN ACCORDANCE WITH ASME Y14.5M-1994

PH. (585) 586-1515
 FAX (585) 377-0220

1385 FAIRPORT ROAD
 FAIRPORT, NY 14450

FORM 0-473 REV. F 04/06/06

TITLE: AC/DC CURRENT SEAL-IN-RELAY

MODEL NO. 909-300-01