

SPECIFICATIONS:

1. MOTOR INFORMATION

MOTOR TYPE: VARIABLE SPEED AC
 FRAME SIZE: RDL1310Y
 RATING: 23.8 KW
 VOLTAGE: 460
 ENCLOSURE: TOTALLY ENCLOSED IP54
 MOUNTING: FLANGE (300mm BOLT CIRCLE)
 COOLING: BLOWER COOLED IC416
 DRIVE METHOD: COUPLED OR BELTED
 ACCESSORIES: ENCODER

2. CONTINUOUS STALL TORQUE: 155 Nm
 MAX AT 155°C WINDING TEMPERATURE, IN A 40°C AMBIENT

3. OPERATING SPEED: 1500 BASE SPEED / 3000 RPM MAX.

4. 1024 SINUSOID/REV ENCODER, WITH MULTI-TURN ABSOLUTE POSITION DATA

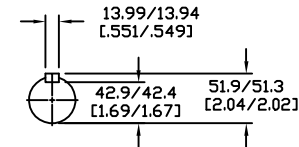
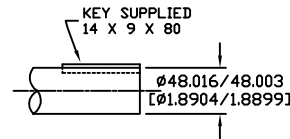
5. FOR ADDITIONAL SPECIFICATIONS SEE L13M5171ESE

6. SHAFT HEIGHT WILL NOT BE EXCEEDED SHIMS UP TO 0.5 MM IN THICKNESS USUALLY REQUIRED FOR COUPLED OR GEARED MACHINES.

7. SHAFT EXTENSIONS ARE ACCORDING TO DIN 748, TOLERANCES ARE BASED ON THE ISA FITTING SYSTEM USING k6 FOR DIAMETERS UP TO 50MM AND m6 FOR DIAMETERS ABOVE.

**8. MAX SHAFT TIR .06 [.002]
 MAX FACE TIR .13 [.005]**

9. MOTOR WEIGHT 166 KG. [366 LBS] (MAY VARY 15%)



DRIVE END SHAFT DETAIL SPEC (9)

| BLOWER CONNECTION | |
|-------------------|-----------|
| STAR CONNECTION | |
| LEAD | 460 VOLTS |
| U1 | R |
| V1 | S |
| W1 | T |
| U2 | |
| V2 | |
| W2 | |
| GRN/YEL | GROUND |
| DELTA CONNECTION | |
| LEAD | 230 VOLTS |
| U1 | R |
| V2 | S |
| W1 | T |
| U2 | |
| V1 | |
| W2 | |
| GRN/YEL | GROUND |

| PIN-OUT | |
|-------------------|----------|
| ENCODER CONNECTOR | |
| PIN | FUNCTION |
| A | SIN + |
| B | SIN - |
| C | CDS + |
| D | CDS - |
| E | DATA + |
| F | DATA - |
| G-M | - |
| N | +9 VDC |
| P | COM |
| R | TS + |
| S | TS - |
| T-V | - |

| MOTOR CONNECTION | |
|------------------|--------|
| TERMINAL BOX | |
| LEAD | SOURCE |
| U1 | L1 |
| V1 | L2 |
| W1 | L3 |
| GREEN | GROUND |

NOTE: ALL DRAWING MODIFICATIONS REQUIRE CUSTOMER APPROVAL

| REV | C/R | REVISION DESCRIPTION | DATE | BY |
|---------------------------------------|-----|-----------------------|----------|-------------|
| | | | | |
| UNLESS OTHERWISE SPECIFIED | | DRAWN BY | DATE | APPROVED BY |
| DO NOT SCALE DRAWING | | GWS | 3/01/06 | WEM |
| DIMENSIONS ARE IN MILLIMETERS | | CATALOG NO. | | |
| WITH INCHES REFERENCED (X.X) | | HPK-B1310C-MA42AA-ESM | | |
| UNTOLERANCED DIMENSIONS ARE REFERENCE | | PART NO. | | |
| THIRD ANGLE PROJECTION | | L13M5171 | | |
| Allen-Bradley | | SCALE | DWG SIZE | SHEET |
| A&B | | N/A | C | 1 OF 1 |

DXF FILE AVAILABLE

