

Spark Detection & Extinguishing Systems

Parts Catalog

CC5000 and CC7000 Series



GreCon®

Spark Detection & Extinguishing Systems

GreCon Control Consoles receive and process signals from sensors then automatically activate individually controlled countermeasures including: extinguishment, deluge, abort, or automatic machinery shutdown. Console enclosures are IP55 (NEMA 12), suitable for severe industrial surroundings. Modular construction. Menu display all functions and test procedures for the console, sensors and extinguishment devices, and a recallable event memory can be displayed or exported. Factory Mutual (FM) Approved.



CC5000 and CC7000 Control Consoles

| Model | Zone Capacity | Cabinet Style | Extension Possibility | Part Number |
|--------|---------------|---------------|-----------------------|-------------|
| CC5001 | 1 | 1 | No | 58161001 |
| CC5002 | 2 | 1 | No | 58161002 |
| CC5004 | 4 | 1 | No | 58161004 |
| CC5016 | 16 | 2 | Yes | 58161016 |
| CC5036 | 36 | 3 | Yes | 58161036 |
| CC7004 | 4 | 1 | Yes | 581611 |
| CC7016 | 16 | 2 | Yes | 581623 |
| CC7036 | 36 | 3 | Yes | 581626 |

CC5000 and CC7000 Extension Cabinets

Additional zone capacity may be achieved by adding extension cabinets. A maximum of two extension cabinets with any master console except 5001, 5002, and 5004.

| Model | Zone Capacity | Cabinet Style | Part Number |
|--------|---------------|---------------|-------------|
| CC5020 | 20 | 2 | 58161020 |
| CC5040 | 40 | 3 | 58161040 |
| CC7020 | 20 | 2 | 5816235 |
| CC7040 | 40 | 3 | 5816265 |

Control Consoles



Operation and Display Panel

5816837 Operation panel
5816836 Touch screen



Modules

59190101 Master module
59190201 Line module version 1
59190202 Line module version 2
59190301 Combi module



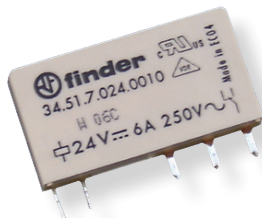
KKSI 9/3 Analog Input Module

5919010 KKSI 9/3 analog input module



Uninterruptible Power Supply

558780 Power supply for cabinet 1
558781.us Power supply for cabinet 2
558782 Power supply for cabinet 3



Relay

56461763.1 24 volt dry contact relay
56962763.2 Relay socket



Batteries

558141 12 volt battery for cabinet 1
564598 12 volt battery for cabinet 2
5645986 12 volt battery for cabinet 3

Alarm Devices

5584118 Strobe light & alarm horn unit 24v
558412 Alarm horn 24v
5584111 Strobe light 24v

Interfaces

5874933 - CC7000 Configuration software
5874934 - CC5000 Tool software
5874935 - CC5000-7000 Printer software

Detection

GreCon Sensors contain photo diode elements which detect even the smallest spark's infrared radiation. Fiber optic cables and sensors are available for high temperature applications up to 1200° F. An internal test light validates the electrical circuitry and wiring. IP 65 (NEMA 4) enclosures. Electronics are shielded against UHF, VHF, or other interference. Sensors are easily installed or removed with mounting adapters.



FM 1/8 Sensor

Low temperature/pressure application sensor for the detection of infrared radiation in the 800 - 1100 nm range.

581540 FM 1/8 sensor
581565 Mounting adapter



DLD 1/8-A Daylight Sensor

Low temperature application sensor for the detection of infrared radiation in the 1650 - 3000 nm range where ambient light is present.

581591 DLD 1/8-A sensor
581591-L DLD A-LL daylight high temp sensor
581397 Mounting adapter
581590 HPD 1/8
558955 1/2 meter fiber optic cable



FM 3/8 Sensor

High temperature/pressure application sensor for the detection of infrared radiation in 800 - 1100 nm range. Sensor is linked to the duct via 3 fiber optic cables.

581550 FM 3/8 sensor
558956 1 meter cable
558957 2 meter
5589575 3 meter cable
581398 Mounting adapter
558627 Cable lens cover



TM 1/8 Type II Rate-of-Rise Sensor

Heat sensor for early detection of temperature rise or rate of rise caused by fire.

5815312 TM 1/8 sensor
581519 AE/71 interface wall mount
5815195 AE/71 interface DIN rail mount
5815375 Mounting adapter
404010 Sensor probe 140° F
404012 Sensor probe 190° F
404014 Sensor probe 225° F
404022 Sensor probe 450° F
5815196 AE91 Interface card 5000/7000



Kelex 1/8 Terminal Box

Junction box for connecting FM Sensors to console. Provides individual 12/24 vdc sensor testing.

5815802

Kelex terminal box

Sensor Heat Shield Mounting Bracket

For mounting FM 3/8 Sensor and Kelex 1/8 Junction Box to the duct. Provides a heat shield for high temperature applications.

486851

Sensor heat shield



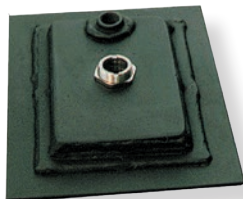
Kelex Mounting Plates

558694

Kelex 1/8 mounting Plate for FM 1/8

5586971

Kelex 1/8 mounting Plate for FM 3/8



Air Purge Plenum

For use with FM 1/8, FM 3/8, and DLD 1/8A sensors in applications where material buildup can blind sensor lens.

404127

FM 1/8 sensor plenum

404130

Cable air plenum

404126

DLD 1/8A plenum



Mounting Band

For mounting FM 1/8 and FM 3/8 Sensors to small diameter or heavy wall pipe.

404290**

Sensor mounting band

404111

Sensor mounting sleeve w/nut

404255**

Cable mounting band

404107

Cable mounting sleeve w/nut

** Pipe Diameter

Extinguishing

Nozzles are pressure activated and contamination free. All extinguishing assemblies are available with either stainless steel or brass nozzles. Stainless steel mounting adapters allow for easy installation and removal.

Extinguishing Assemblies

1-3 nozzle extinguishing assemblies include connecting pipe, shut off valve, valve assembly, plug, coil (12, 24 VDC), nozzle(s), and nozzle mounting adapters.

| | |
|----------|--------------------|
| 486002 | LS-1-BR 12V |
| 486004 | LS-1-BR 24V |
| 4860004B | LS-1-BR 24V (band) |
| 486014 | LS-1-SS 24V |
| 486016 | LS-1-SS 12V |
| 486016B | LS-1-SS 24V (band) |
| 486006 | LS-2-BR 12V |
| 486008 | LS-2-SS 24V |
| 486018 | LS-2-SS 12V |
| 486020 | LS-2-SS 24V |
| 486010 | LS-3-BR 12V |
| 486023 | LS-3-SS 12V |
| 486029 | LS-1-SS 24V UHS |

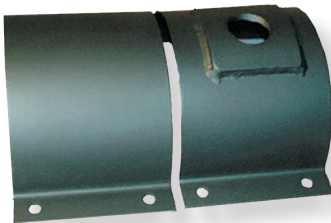


Model Designation
 First number = number of nozzles
 BR = brass nozzles
 SS = stainless steel nozzles
 Last number = DC voltage
 band = no mounting adapter



Extinguishing Nozzles - K45

| | |
|----------|-------------------------|
| 561523 | Brass |
| 561522 | Stainless steel |
| 581429 | Nozzle mounting adapter |
| 56151911 | UHS stainless steel |
| 58142953 | UHS SS mounting adapter |



Nozzle Mounting Band

For mounting nozzle to small diameter or heavy wall pipes.

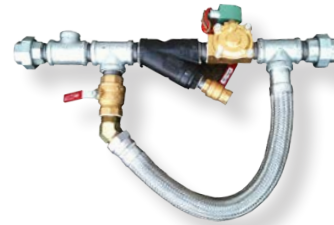
| | |
|----------|------------------------------|
| 404280** | Nozzle mounting band |
| 404184 | Nozzle mounting sleeve w/nut |

** = pipe diameter



Extinguishing Spare Parts

| | |
|--------------|---|
| 599718 | 1" solenoid valve, Y-strainer & O-rings |
| 599712 | 1" solenoid valve only |
| 5914018.22 | Y-strainer screen only |
| 56146172.12 | 12V Solenoid clip-on coil |
| 56146172.24 | 24V Solenoid clip-on coil |
| 5614592 | Coil plug |
| 561461725.24 | 24V high pressure clip-on coil |
| 561511 | SIKA VHS-05-M flow switch (1/2" NPT connection) |
| 486438 | SIKA VHS-06-M flow switch (1" NPT connection) |
| 56146173 | Valve w/24V coil UHS |



Freeze Protection

Insulation jackets protect the extinguishing devices against freezing when used in conjunction with heat tape.

| | |
|--------|--------------------|
| 404400 | EJ/0 jacket deluge |
| 404402 | EJ/1 jacket LS1 |
| 404404 | EJ/2 jacket LS2 |
| 404406 | EJ/3 jacket LS3 |

Deluge Valve Assembly with Manual By-Pass

| | | |
|--------|--------|------------|
| 486169 | 1" | 120VAC ASC |
| 486170 | 1 1/4" | 120VAC ASC |
| 486171 | 1 1/2" | 120VAC ASC |
| 486173 | 2" | 120VAC ASC |
| 486175 | 2 1/2" | 120VAC ASC |

Deluge Spare Parts

| | |
|--------|-----------------------------------|
| 404195 | Brass Nozzle K65 |
| 404196 | Stainless steel nozzle K65 |
| 581429 | Nozzle mounting adapter |
| 440724 | 1" metal braided by-pass hose |
| 440728 | 1 1/4" metal braided by-pass hose |
| 440725 | 1 1/2" Metal braided by-pass hose |
| 440736 | 2" metal braided by-pass hose |
| 440738 | 2 1/2" metal braided by-pass hose |
| 561504 | WP-1 water flow switch |
| 484308 | 1" Y-strainer & screen |
| 484305 | Y-strainer screen only |



Deluge Valve Assemblies

Deluge solenoid valve assemblies for 3/4 to 2 1/2". Assemblies include solenoid valve, "Y" strainer, and ball valve.

| | | |
|------------------------------|--------|------------|
| 486269 | 3/4" | 24VDC ASC |
| 486270 | 1" | 24VDC ASC |
| 486271 | 1 1/4" | 24VDC ASC |
| 486272 | 1 1/2" | 24VDC ASC |
| 486274 | 2" | 24VDC ASC |
| 486275 | 2 1/2" | 24VDC ASC |
| 24V DC power supply required | | |
| 486259 | 3/4" | 120VAC ASC |
| 486262 | 1" | 120VAC ASC |
| 486263 | 1 1/4" | 120VAC ASC |
| 486264 | 1 1/2" | 120VAC ASC |
| 486266 | 2" | 120VAC ASC |
| 486267 | 2 1/2" | 120VAC ASC |
| 120VAC power supply required | | |

Deluge Valves Only

| | | |
|----------|--------|------------|
| 599712 | 1" | Valve BJ |
| 5614611 | 1 1/4" | Valve BJ |
| 56146132 | 1 1/2" | Valve BJ |
| 56146142 | 2" | Valve BJ |
| 486230 | 3/4" | 24VDC ASC |
| 486232 | 1" | 24VDC ASC |
| 486234 | 1 1/4" | 24VDC ASC |
| 486236 | 1 1/2" | 24VDC ASC |
| 486240 | 2" | 24VDC ASC |
| 486242 | 2 1/2" | 24VDC ASC |
| 486200 | 3/4" | 120VAC ASC |
| 486204 | 1" | 120VAC ASC |
| 486208 | 1 1/4" | 120VAC ASC |
| 486212 | 1 1/2" | 120VAC ASC |
| 486220 | 2" | 120VAC ASC |
| 486224 | 2 1/2" | 120VAC ASC |

Booster Pumps and Abort Gates

GreCon water pressure booster pumps provide increased water pressure and flow rates for extinguishing operations. Standard booster pumps are designed to increase plant pressure up to 65psi. Non-standard sizes available on request.



Pressure Booster Pump Spare Parts

System Parts

| | |
|----------|--|
| 486402 | 50 or 80 gal. tank bladder (STA-Rite or PRO-Source tank) |
| 486404-1 | 80 gal. Elbi tank bladder |
| 486407 | 80 gal. PRO-Source tank w/bladder |
| 405243 | Pressure gauge 0-60 psi |
| 486379 | Pressure relief valve |
| 486360 | 2"Ø spring check valve |
| 486412 | 5HP x 460V pump motor |
| 486413 | 5HP x 575V pump motor |
| 486414 | 7 1/2HP x 460 pump motor |
| 486415 | 7 1/2HP x 575V pump motor |

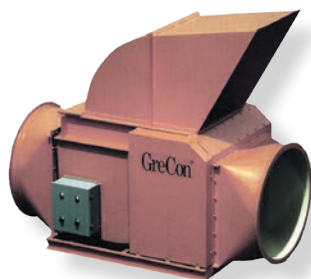
B1-1/2 TPMS Pump Parts

| | |
|--------|-----------------|
| 486430 | Mechanical seal |
| 486431 | Impeller |
| 486432 | Volute Gasket |
| 486433 | Impeller washer |
| 486434 | Shaft sleeve |
| 486435 | Impeller screw |
| 486436 | Key |
| 486437 | Retaining ring |

GWS 3/32 Pump Spare Parts

| | |
|--------|-------------------------|
| 486411 | 3HP x 460V pump motor |
| 486439 | Mechanical seal |
| 486440 | 2nd stage impeller |
| 486441 | 2nd stage impeller seal |
| 486442 | Intermediate chamber |
| 486443 | 1st stage impeller |
| 486444 | 1st stage impeller seal |
| 486445 | Suction chamber |

GreCon Fail-Safe abort gates exhaust hazardous air flow from the ducting. Activated by the sensors, a spring-loaded gate closes in less than 500 milliseconds. NFPA 664 standard compliant for recycling exhaust air.



Abort Gate Spare Parts

| | |
|--------|------------------------------|
| 440020 | RU-1 rectifier |
| 440810 | Electro magnet |
| 496275 | Gasket rope |
| 440910 | 6" Minipak actuator 12-22" |
| 440913 | 12" Minipak actuator 23-28" |
| 440911 | 6" Superpak 29-36" |
| 440912 | 12" Superpak actuator 37-42" |
| 440920 | 18" Superpak actuator 43-60" |
| 496201 | EPDM rubber |
| 440330 | Limit switch |
| 440332 | Limit switch arm |

