

## Butterfly Wafer / Lug Pneumatic actuated

Köly GmbH • Funkweg 12 a • 89250 Senden • Telefon 0 73 07 / 98 98 0 • Fax 0 73 07 / 98 98 20 • E-Mail: info@koely.de • Internet: www.koely.de



### technical information butterfly

#### material:

body:	GG25 GGG40 Edelstahl
disc:	stainless steel <b>or</b> GJS Sphäroguss EPOXY-beschichtet ALU-Bronze, stainless steel HALAR stainless steel PFA
stem:	stainless steel

#### material seats:

EPDM, NBR, VITON,  
NBR carboxyl, EPDM weiß,  
Hypalon, EPR/PTFE,  
Silikon/PTFE, Silikon

### temperature range (last page)

<b>connection:</b>	- PN 10, PN 16 - ASA 150
<b>Nominal pressure:</b>	max. 16 bar <b>(except: Lug at DN200 max. 10 bar)</b> PN20 and PN25 on request
<b>length:</b>	DIN 3202 part 3 K1, ISO5752-Serie 20

### design features

- head flange according to ISO 5211
- no deflection of the cuff by dovetail form with inclusion in the casing
- waves securing
- secondary stem seal
- one-piece shaft in stainless steel
- seat, stem and body without medium contact
- Spherical shaped disc operated by many teeth
- Self centering for even wear
- Low torque
- ÖKO-design
- Anti-blowout
- Double watertightness

### technical information actuator

#### material:

body:	anodized aluminium
stem:	anodized aluminium
piston:	aluminium
caps:	plastic caps PA6 GF30 from PDD/PDE 012 → painted aluminium

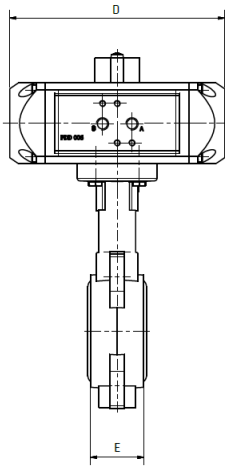
**seals:** NBR (VITON on request)

<b>ambient temperature:</b>	-20°C to +80°C
<b>operating pressure:</b>	2,5 bis 10 bar
<b>mounting position:</b>	any
<b>drive connection:</b>	Octagonal according to DIN 3337
<b>mounting flange:</b>	according ISO 5211
<b>certification:</b>	ATEX CE EX II 2 GD c

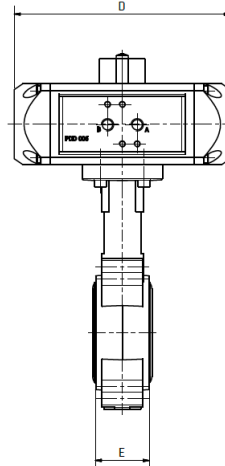
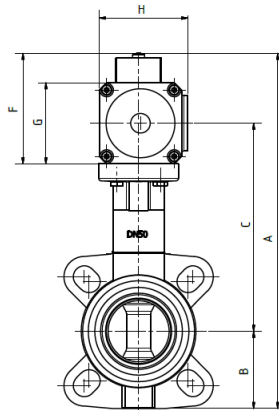


**Butterfly**  
**Wafer / Lug**  
**Pneumatic actuated**

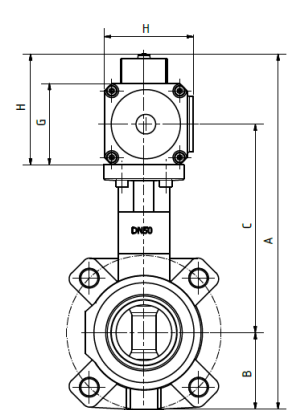
Köly GmbH • Funkweg 12 a • 89250 Senden • Telefon 0 73 07 / 98 98 0 • Fax 0 73 07 / 98 98 20 • E-Mail: info@koely.de • Internet: www.koely.de



**KLZ (wafer)**



**KLA (Lug)**



connection KLZ or KLA	DN	PN	actuator size	A	B	C	D	E	F	G	H	ISO-Flange	SW
KLZ*	25	10	PDD 006 PDE 006	264	50	158	165	32	90	66	72	F05	11
KLZ / KLA**	32	16	PDD 006 PDE 006	277	57	163	165	32	90	66	72	F05	11
KLZ / KLA**	40	16	PDD 006 PDE 006	277	57	163	165	32	90	66	72	F05	11
KLZ / KLA	50	16	PDD 006 PDE 012	288	63	169	165	43	90	66	72	F05	11
				324		186	184		125	100	84		
KLZ / KLA	65	16	PDD 006 PDE 012	306	71	178	165	46	90	66	72	F05	11
				341		195	184		125	100	84		
KLZ / KLA	80	16	PDD 006 PDE 012	331	90	184	165	46	90	66	72	F05	11
				366		201	184		125	100	84		
KLZ / KLA	100	16	PDD 012 PDE 025	407	107	225	184	52	125	100	84	F05	11
				427		235	260		145	120	107		
KLZ / KLA	125	16	PDD 025 PDE 050	455	120	250	260	56	145	120	107	F07	14
				490		267	298		180	155	140		
KLZ / KLA	150	16	PDD 025 PDE 050	480	132	263	260	56	145	120	107	F07	14
				515		280	298		180	155	140		
KLZ / KLA	200	16	PDD 050 PDE 050	591	165	323	298	60	180	155	140	F07	14
KLZ / KLA	250	16	PDD 090 PDE 130	669	201	357	390	68	197	172	152	F10	22
				694		369	458		222	197	175		
KLZ / KLA	300	16	PDD 090 PDE 130	729	236	382	390	78	197	172	152	F10	22
				754		394	458		222	197	175		

All dimension +/- 2 mm

technical charges reserved

\* only in body GG25 with stainless steel disc

\*\* KLA (Lug) only in body GGG40



**Butterfly**  
Wafer / Lug  
Pneumatic actuated

---

Köly GmbH • Funkweg 12 a • 89250 Senden • Telefon 0 73 07 / 98 98 0 • Fax 0 73 07 / 98 98 20 • E-Mail: info@koely.de • Internet: www.koely.de

**Temperature range seats**

TYP	Min.	Max.
EPDM	-10°C	+110°C
NBR	+5°C	+85°C
VITON	+5°C	+180°C
EPDM white	+8°C	+80°C
Hypalon	+5°C	+90°C
Silicon	-10°C	+200°C
NBR carboxyl	+5°C	+110°C
EPR/PTFE	+5°C	+150°C
Silicon/PTFE	-40°C	+200°C