

PN4

PN4

- Characteristics
- precision switching
 - long mechanical life
 - screw terminals

Rating 250 VAC, 15 A

Dimensions (mm) 49 × 22 × 17.5

- Actuator
- plunger
 - plain lever
 - roller lever

Approvals UL, CSA



Preferred Range

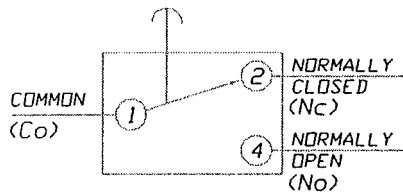
Ordering Reference	Actuating Force (N)	Actuating Force (ozf)	Sealing	Operating pos. (mm)	Operating pos. (in)	Terminal	Circuit	Actuator	Contacts	Electrical rating
PN401	3.8	13.7	IP40	16.0	0.63	Screw/washer	CO	Plunger	Ag	Up to 250 VAC, 15 A
PN4D2	3.8	13.7	IP40	22.2	0.87	Screw/washer	CO	Spring plunger	Ag	Up to 250 VAC, 15 A
PN4K152	0.3	1.08	IP40	25.0	1.00	Screw/washer	CO	Plain lever (length 152 mm, 6.0 in)	Ag	Up to 250 VAC, 15 A
PN4K63	0.9	3.2	IP40	19.0	0.75	Screw/washer	CO	Plain lever (length 63.5 mm, 2.5 in)	Ag	Up to 250 VAC, 15 A
PN4KZ56	1.5	5.4	IP40	8.5	0.33	Screw/washer	CO	Reverse action plain lever	Ag	Up to 250 VAC, 15 A
PN4GK48	1.1	4.0	IP40	30.2	1.19	Screw/washer	CO	Roller lever (length 48.2 mm, 1.90 in)	Ag	Up to 250 VAC, 15 A
PN4GK26	1.7	6.1	IP40	30.2	1.19	Screw/washer	CO	Roller lever (length 26.7 mm, 1.05 in)	Ag	Up to 250 VAC, 15 A
PN41	3.8	13.7	IP40	21.8	0.86	Screw/washer	CO	Long overtravel plunger	Ag	Up to 250 VAC, 15 A
PN4G	3.8	13.7	IP40	33.3	1.31	Screw/washer	CO	Spring plunger, in-line roller	Ag	Up to 250 VAC, 15 A
PN4GH	3.8	13.7	IP40	33.3	1.31	Screw/washer	CO	Spring plunger, across-line roller	Ag	Up to 250 VAC, 15 A

Specifications

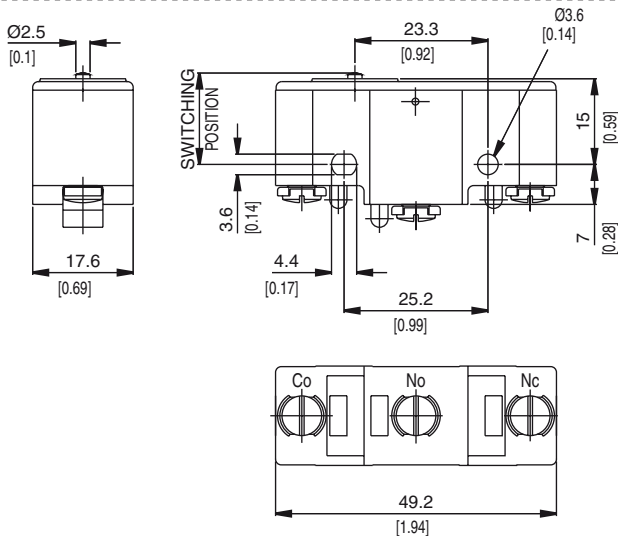
Housing	PBT thermoplastic polyester resin
Plunger	PBT thermoplastic polyester resin
Mechanism	Snap-action, single pole
Functions	Change-over
Contacts	Silver
Terminals	Screw terminals with cup washers
Temperature range °C	-10°C to +85°C
Mechanical life	10 ⁶ cycles minimum (impact free actuation)
Protection	IP 40 (enclosure)
Mounting	Side or panel mounting
Actuators	Plain levers - zinc-plated mild steel, Roller levers - zinc-plated mild steel, stainless steel roller

Circuit diagram

DIAGRAM OF CONNECTIONS




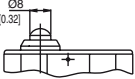
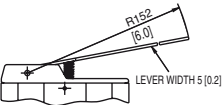
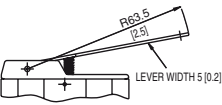
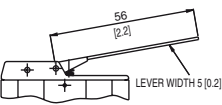
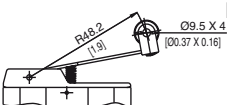
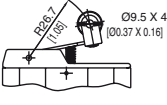
Dimensions



Recommended maximum electrical ratings

Voltage (max)	Load (A)	Horsepower	Approval
250 VAC	15 (0.75 pf)	-	ULS 1054/CSA 22.2 No. 55 - 6,000 operations
125 VAC	15 (0.75 pf)	-	ULS 1054/CSA 22.2 No. 55 - 6,000 operations
250 VAC	-	¼ HP	ULS 1054 - Horsepower - 6,000 operations
125 VAC	-	¼ HP	ULS 1054 - Horsepower - 6,000 operations
0 - 15 VDC	15	-	General rating - 50,000 operations
15 - 30 VDC	10	-	General rating - 50,000 operations

Operating Characteristics

Actuator	Reference	Actuating Force Maximum		Release Force Minimum		Operating Position		Movement Differential Minimum		Over travel	
		(N)	(ozf)	(N)	(ozf)	(mm)	(in)	(mm)	(in)	(mm)	(in)
Plunger 	PN401	3.8	13.70	1.3	4.7	16.0 ± 0.4	0.63 ± 0.016	0.02	0.0008	0.2	0.008
Spring plunger 	PN4D2	3.8	13.70	1.3	4.7	22.2 ± 0.4	0.87 ± 0.016	0.04	0.0016	2.3	0.09
Plain lever 	PN4K152	0.3	1.08	0.1	0.36	25.5 ± 1.5	1.00 ± 0.060	3.0	0.12	10.0	0.39
Lever width: 5 mm, 0.2 in											
Plain lever 	PN4K63	0.9	3.20	0.1	0.36	19 ± 0.8	0.75 ± 0.032	1.2	0.047	5.6	0.22
Lever width: 5 mm, 0.2 in											
Reverse action plain lever 	PN4KZ56	1.5	5.40	0.5	1.80	8.5 ± 0.8	0.33 ± 0.032	1.0	0.004	6.0	0.24
Lever width: 5 mm, 0.2 in											
Roller lever 	PN4GK48	1.1	4.00	0.2	0.72	30.2 ± 0.8	1.19 ± 0.032	0.9	0.035	4.2	0.165
Roller lever 	PN4GK26	1.7	6.11	0.2	0.72	30.2 ± 0.8	1.19 ± 0.032	0.5	0.02	2.0	0.079

Operating Characteristics

Actuator	Reference	Actuating Force		Release Force		Operating Position		Movement Differential		Over travel	
		Maximum (N)	(ozf)	Minimum (N)	(ozf)	(mm)	(in)	Minimum (mm)	(in)	(mm)	(in)
Long overtravel plunger	PN41	3.8	13.70	1.3	4.7	21.8 ± 0.7	0.86 ± 0.028	0.04	0.0016	5.5	0.21
Spring plunger - in-line roller	PN4G	3.8	13.70	1.3	4.7	33.3 ± 1.2	1.31 ± 0.047	0.04	0.0016	3.5	0.14
Spring plunger - across-line roller	PN4GH	3.8	13.70	1.3	4.7	33.3 ± 1.2	1.31 ± 0.047	0.04	0.0016	3.5	0.14

Ordering Reference

Basic type	PN4	Example: PN4	01
Actuators	01 Plain plunger 1 Panel mount plunger D2 Spring plunger G Plunger with in-line roller GH Plunger with across-line roller GK26 Roller lever 26.0 mm GK35 Roller lever 35 mm GK48 Roller lever 48.2 mm GK63 Roller lever 63 mm K48 Plain lever 48 mm K63 Plain lever 63.5 mm K63X Plain lever 63 mm without spring K152 Plain lever 152.0 mm KZ56 Reverse action roller lever 56.0 mm		
Special Features	<p>Burgess specialise in customer specific solutions. Additional product variants are available or can be provided. If your requirements cannot be satisfied from the options listed, please contact www.saia-burgess.com or your local SB outlet.</p>		

PN4 Terminal cover / Part No: 3.204.0222