

Leuvensesteenweg 605 - 1930 Zaventem - Belgium
 Tel (02) 757 90 75 Telefax (02) 757 90 23

VALVE SPECIFICATION SHEET

MYCOM code	Description
SLV-ME-...V...Hz	2/2 solenoid valve, Normally closed, A.C.
SLV-ME-...VDC	2/2 solenoid valve, Normally closed, D.C.

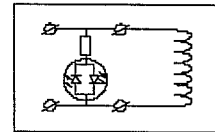
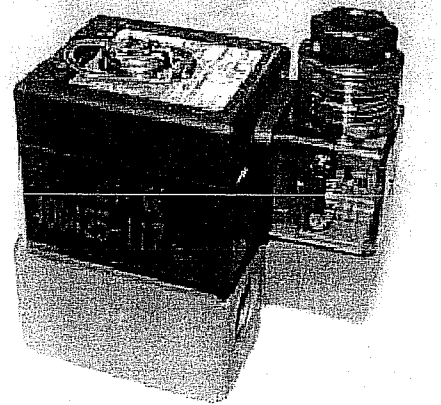
- 19
- 21
- 22
- 23
- 31
- 33
- 34
- 35
- 53

GENERAL:

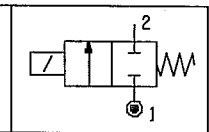
Construction : 2/2, Normally closed
 Maximum allowable pressure: 40 bar
 Response time : 5 - 25 msec
 Lifetime coil : 30.000 hrs
 Lifetime valve, expected : 500.000 cycles, dependent upon service

CONSTRUCTION:

Body : Aluminium , Anodized
 Core tube : Stainless steel, AISI type 304
 Core and plugnut : Stainless steel, AISI type 430F
 Springs : Stainless steel, AISI type 302
 Seat : Stainless steel, AISI type 303
 Sealing : PTFE
 Disc : PTFE
 Shading coil : Aluminium (A.C. Only)
 Coil insulation class : F (155°C)
 Power consumption : 10.5 (A.C.), 23.5 (D.C.) Watt
 Enclosure : Fully encapsulated solenoid, IP-65
 Electrical connection : Spade plug connector with led.
 Pipe connections : 3/8" Rc (BSPT)
 P.E.D. (97/23/EC) category : S.E.P. , Article 3.3



Electrical Schematic

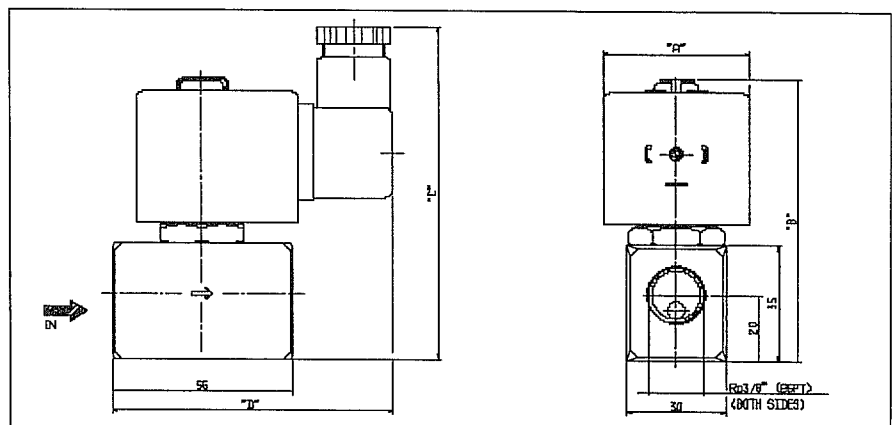


ISO-Symbol

Fluids	Temperature ranges
Light oil / NH3 / Freon	-20 to +130°C

Ambient temperature ranges
-20 to +75°C

DIMENSIONS (mm)		
	A.C.	D.C.
A	45	50
B	85	95
C	98	94
D	86	90



PRODUCTS:

Pipe size	Orifice size	Flow coefficient		Operating pressure differential (bar)		Coil type	Catalogue number
		Kv		min.	maximum		
Rc	(mm)	(m³/h)	(l/min)			=	PTFEsealing
3/8	2,7	0,26	4,2	0	20	(A.C.) MXX (D.C.) M12	SLV-ME-...V...Hz SLV-ME-...VDC