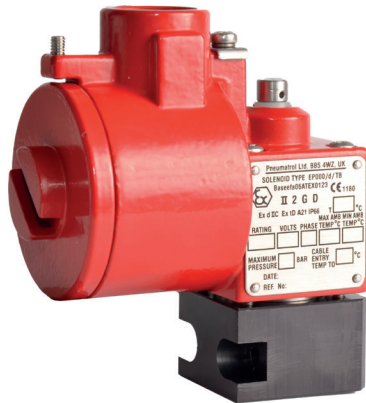
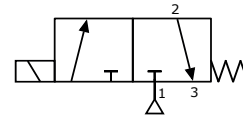


CNOMO Based Solenoid, E13AXC Series



DESCRIPTION

Direct acting spring return normally closed solenoid, conforming to CNOMO standards.

Hazardous area approved pilot operators (ExnA, Exm, Exme, Exd and Exia) are available with various international approvals – ATEX, IECEx, FM, GOST CU TR (Russia) and NEPSI (China).

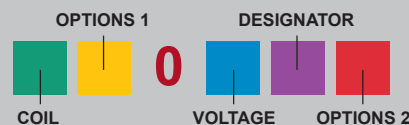
Body material available in

- Aluminium (standard)
- Stainless Steel
- Brass

FEATURES

- Direct mounting to all valves meeting CNOMO fixing dimensions
- Interchangeable coils, including various hazardous area options
- Pilot exhaust dust caps fitted as standard

PRODUCT CODE: **E 1 3 A X C**



SEE BELOW FOR
PRODUCT CODE
DETAILS

Any of the below options that are not required enter '0' in relevant box.

Coil

A	Exia (BASEEFA)
B	Terminal Box
D	Exd
H	Plug & Socket Exia
N	ExnA
P	Plug & Socket
S	Exia (BASEEFA) Stainless Steel Housing
T	Inline Terminal Box
U	Exia (FM)
0	No Coil Unit
9	Exm

Options 1

C	Lever manual override
D	Push button manual override
S	Screw driver override (standard)
0	No option required

Standard Voltage

B	24v DC
H	24v DC Low Power ⁽¹⁾
R	24v AC (50/60 Hz)
T	110v AC (50/60 Hz)
N	220v AC (50/60 Hz)
U	240v AC (50/60 Hz)

* A comprehensive range of non-standard voltages available on request

Designator

A	ATEX
B	Exia 10mA
C	IECEx ⁽²⁾
E	Exme 0.5W
G	ATEX Exd IIB
H	Exm
J	Exme 2.4W
R	GOST CU TR ⁽³⁾
X	NEPSI ⁽⁴⁾

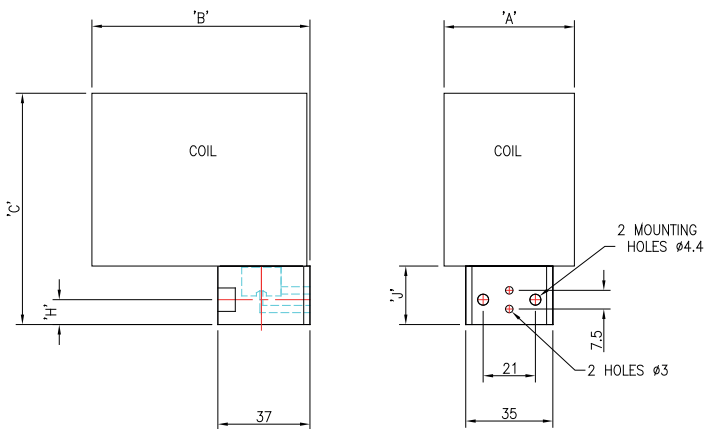
Options 2

B	Valve body brass
E	1/2" NPT electrical connection
L	Low temperature duty -40°C
S	Valve body stainless steel
X	Valve suitable for use with Oxygen

Note:

- (1) "H" option not available with Exia solenoids
- (2) IECEx only available with Exia and Exd Solenoids
- (3) GOST CU TR only available with Exd solenoids
- (4) NEPSI only available with Exia and Exd solenoids

DIMENSIONS (mm)



COIL TYPE	A	B	C	H	J
Heavy Duty Mazak Plug & Socket	36	81	67	10.5	24
Standard Terminal Box	36	68	75	10.5	24
SS Terminal Box	52	88	92	10.5	24
ExnA Terminal Box	36	68	75	10.5	24
Exd SS Terminal Box	52	88	92	10.5	24
Exm Flying Lead	36	75	63	11.5	31.5
Exme Terminal Box	36	68	75	11.5	31.5
Exia SS Terminal Box	52	88	99	11.5	31.5
Exia Std. Terminal Box	36	68	82	11.5	31.5
Exia Plug & Socket	36	94	70	11.5	31.5

MATERIAL SPECIFICATIONS

STANDARD

Body	Natural Anodised Aluminium (Dural)
Jet	Brass

VALVE SPECIFICATIONS

STANDARD

Working Pressure	0 to 10 bar
Cv Factor	0.06 (0.04 Intrinsically safe coil)
Flow Rate (at 6 bar with 1 bar pressure drop)	62 l/min 42 l/min (Intrinsically safe coil)
Maximum Ambient Temperature	+80 °C
Minimum Working Temperature	-20 °C

COIL DETAILS

Coil Type	Plug & Socket	Terminal Box	ExnA	Exd	Exm	Exia
Area Class	Safe	Safe	Zone 2	Zones 1 & 2	Zones 1 & 2	Zone 0, 1 & 2
Area Category	N/A	N/A	ExN II T4-T6	Exd IIC T3-T6	Exm IIC T5	Exia IIC T6
Ingress Protection	IP65	IP65	IP65	IP66	IP65	IP65
Cable Entry	PG.9	M20 x 1.5	M20 x 1.5	M20 x 1.5	Flying leads	M20 x 1.5
Ambient Temperature	-20 to +80 °C	-20 to +80 °C	-40 to +60 °C	-60 to +80 °C	-20 to +65 °C	-40 to +65 °C
Magnetic Wire Class	H	H	H	H	H	H

*** FURTHER SOLENOID OPTIONS AVAILABLE ON REQUEST**