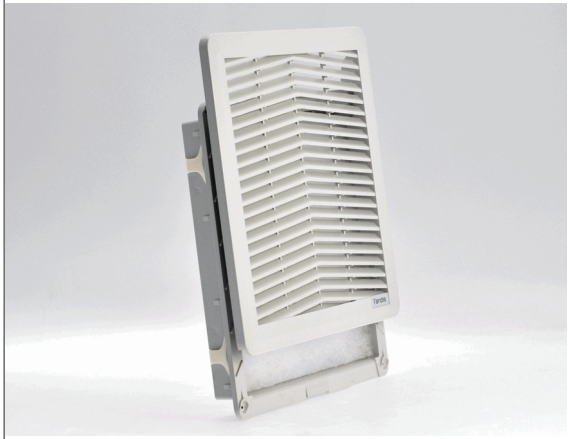


**"FF" SERIES FILTER UNITS**

Description: **Filter**



**Type of material:** PC/ABS Alloy; PA 66 GF13 HSL for elastic clips

**Standard color:** RAL 7035 - other colors on request

**Protection degree:** IP54, according to EN 60529 std  
Type 12 according to UL 508 Std

**Fixing system:** by elastic clips, otherwise by four self-threading screws

**Plate thickness:** FF08 from 1.0 to 2.0 mm, FF12 and FF13 from 1.3 to 3.2 mm, FF15 and FF20 from 1.3 to 3.7 mm (up to 4 mm with cut-out max tolerance).

**Rated temperature range:** from -10°C to + 60°C

**Storage temperature:** from -40°C to + 70°C

**Filtering class:** class G3, according to EN 779

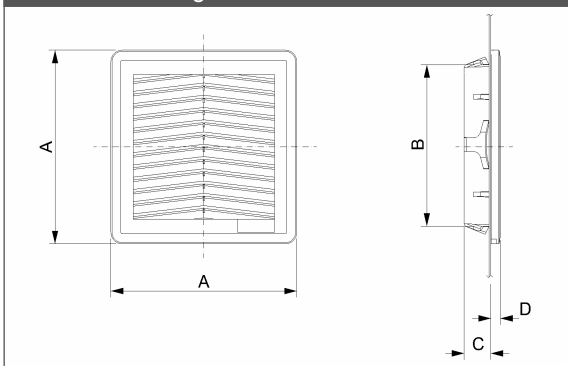
**Degree of separation:** 85% - DIN 24185

**Dust retention capacity:** 600 g/m<sup>2</sup>

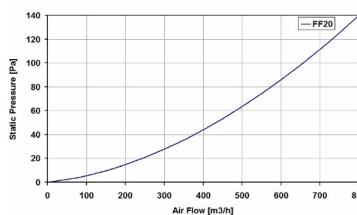
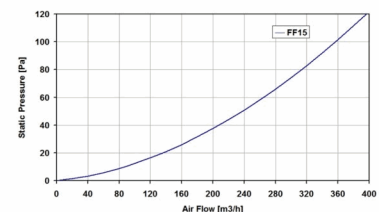
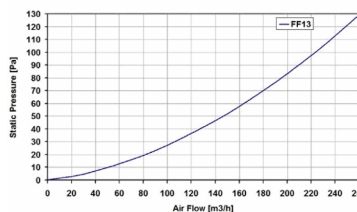
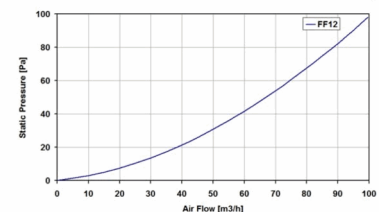
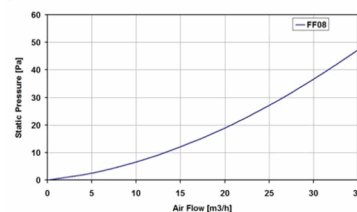
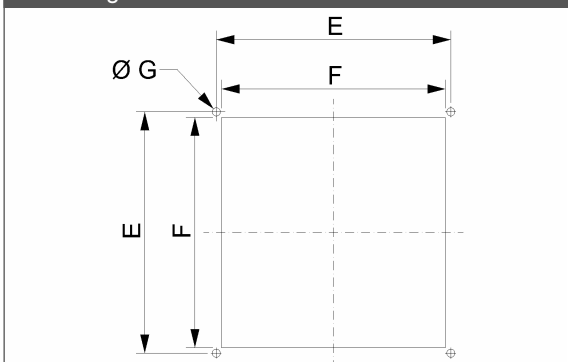
**Note:** filter media is washable for about 10 times

**Approvals:** CE, UL E237844, CSA

**technical drawing**



**mounting cut-out**



Model	A	B	C	D	E	F	G	Cross section free without media	Weight	Approvals
	(mm)	(mm)	(mm)	(mm)	(mm)	(mm)	(mm)	(cm <sup>2</sup> )	(Kg)	
FF08U	106.5	91.5	16.5	6.7	95	91.5 <sup>+1.5</sup> <sub>-0</sub>	1.8	30	0.07	CE; cURus; cCSAus
FF12U	150	124	21.5	7.7	131	124 <sup>+1.5</sup> <sub>-0</sub>	4.5	59	0.18	CE; cURus; cCSAus
FF13U	203.9	176	21.5	8	185	177 <sup>+1.5</sup> <sub>-0</sub>	4.5	134	0.26	CE; cURus; cCSAus
FF15U	250	223	24.9	8.9	230	223 <sup>+1.5</sup> <sub>-0</sub>	4.5	207	0.42	CE; cURus; cCSAus
FF20U	325	291	24.5	9.5	302	291 <sup>+1.5</sup> <sub>-0</sub>	4.5	383	0.60	CE; cURus; cCSAus

data with uncertainty of 15%

All specifications, data and drawing are subject to change without notice and are approximate. Please refer to our terms of sales including our warranty and limited liabilities clauses.