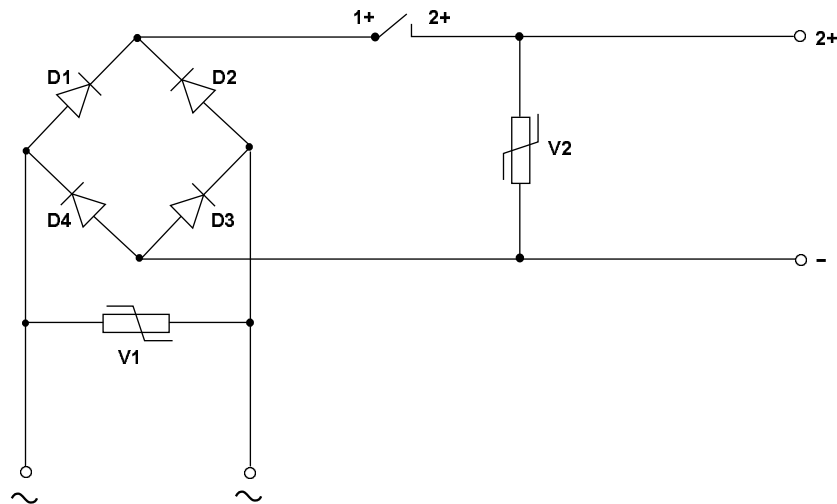
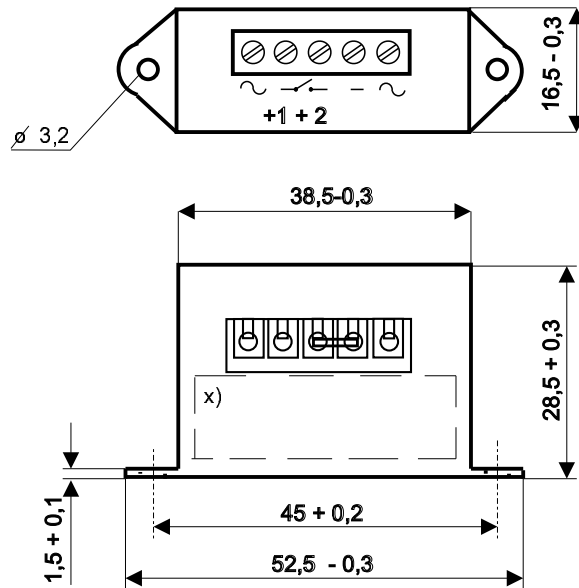


# DATA SHEET

## Full Wave Rectifier for Electromagnetic Brakes U230



Input Voltage 230VAC  
 Output Voltage with no load 250V +/-10%  
 Output Voltage at 220R load 220V +/-10%

The rectifier is in plastic enclosure which can be fitted inside the terminal box by two screws or can be stuck down using a suitable adhesive.

The rectifier is supplied with a jump lead between +1 & +2 terminals.