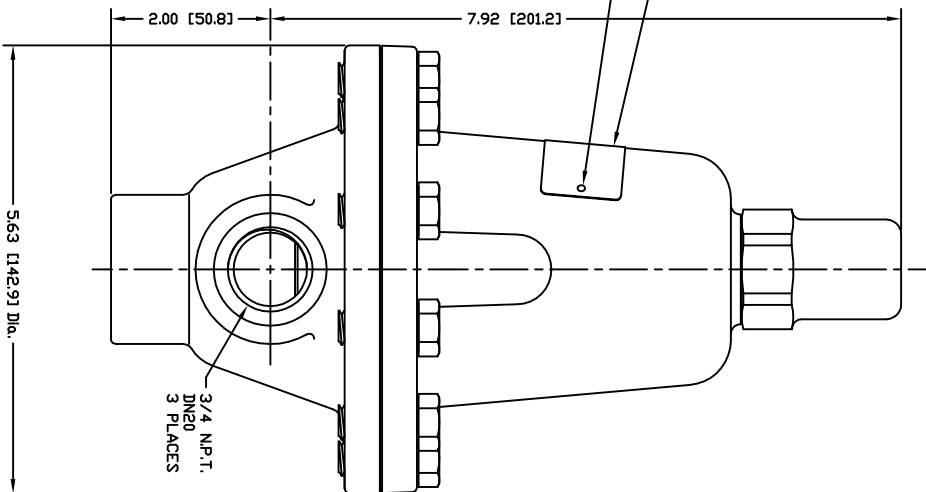
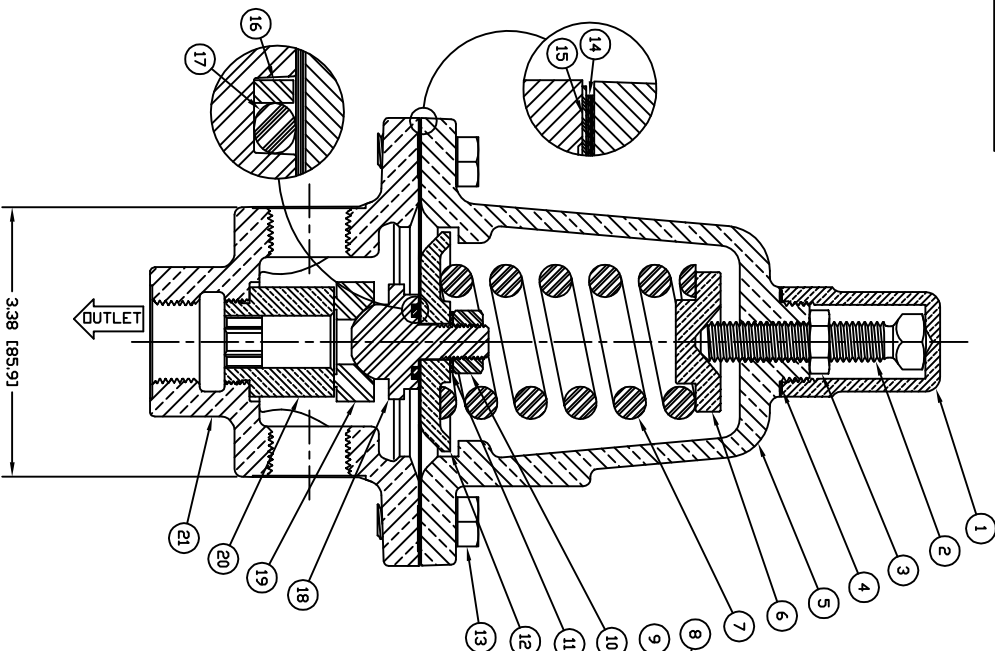


13784



LIST OF MATERIALS

ITEM QTY	PART NO.	DESCRIPTION	MATERIAL
1	05248	Adjusting Screw	Co# Brass
2	16558	Lock Nut	316 SST
3	05368	Gasket	Brass
4	11929	Spring Chamber	Teflon
5	05249	Spring Button	Brass
6	05185	Pressure Spring	SST
7	13457	Name Plate	Aluminum
8	02533	Drive Screw	SST
9	08709	Nut	SST
10	11046	Washer	302 SST
11	05251	Pressure Plate	Brass
12	09133	Screw	SST
13	05253	Diaphragm	Bronze
14	07265	Gasket	Teflon
15	10444	D-Ring	303 SST
16	06962	Ball Seat	303 SST
17	05257	Seat Ring	303 SST
18	05259	Body Seat	Brass
19	05260	Body	Bronze
20	13391		
21			

NOTES:

1. DIMENSIONS ARE APPROXIMATE.
2. SEE ED2049 FOR MARKING INSTRUCTIONS.
3. SEE ED2046 FOR ASSEMBLY AND TEST INSTRUCTIONS.
4. CLEAN FOR OXYGEN SERVICE.

REV.	DATE	REVISION NUMBER
F	12-06-90	16558 VAS 14054
E	08-02-90	VAS 17240
G	05-01-91	CRISLET 11929 VAS 05184



BACK PRESSURE VALVE

CRYOGENIC

CASH VALVE INC.

2400 7TH AVE. SW. DALLAS, ALABAMA 35005

REV.	DATE	REV.	DATE
JAD			
FR			

13784

REV. G