



Sample image

CA10

Type Size: S0

Classification Contact: SOLID CONTACT

Classification Contact Mat: SILVER

Classification Terminal: SCREW TERMINAL

Contact development: WAA234

Face plate engraving: F110

Type of mounting: E

IEC 60947-3 EN 60947-3, VDE 0660 Teil 107

Rated insulation voltage U_i

Voltage (V)	AC / DC
690	AC / DC

Rated impulse withstand voltage U_{imp}

Voltage (kV)	Overvoltage category	Pollution degree	Supply system	Function
4	III	3	Valid for lines with grounded common neutral termination	Switch disconnecter

Rated uninterrupted current I_u/I_{th}

Current (A)	Ambient temperature (°C)	Peak temperature (°C)	additional requirements
20	55	60	Ambient temperature +55°C during 24 hours with peaks up to +60°C

Rated operational current I_e

Utilization category	Voltage (V)	Current (A)
AC-15	220-240	5
AC-15	380-440	4

Rated operational power

Utilization category	Voltage (V)	No. of phases	No. of poles	Power (kW)	Current (A)
AC-3	220-240	3	3	3,00	--
AC-3	380-440	3	3	5,50	11,50
AC-3	660-690	3	3	5,50	--
AC-3	220-240	1	2	2,20	--
AC-3	380-440	1	2	3,00	--
AC-23A	220-240	3	3	3,70	--
AC-23A	380-440	3	3	7,50	15,50
AC-23A	660-690	3	3	7,50	--
AC-23A	220-240	1	2	2,50	--
AC-23A	380-440	1	2	3,70	--

UL60947-4-1, UL508

SCCR / Max. fuse rating

Conditions of acceptability

These devices are suitable for use on circuits capable of delivering not more than 5000 rms symmetrical amperes, 600V ac max. when protected by Class RK1 fuses. Manual Motor Controllers when intended for use as a motor disconnecter are suitable for use on a circuit capable of delivering not more than 5000 rms symmetrical amperes, 600V ac max. when protected by 30A Class J time delay fuses.

Connecting instructions

Markings

When intended for use as a motor disconnecter the device shall be provided with a method of being locked in the OFF-position.

Rated insulation voltage U_i

Voltage (V)	AC / DC
300	AC

GENERAL TECHNICAL INFORMATION

Tightening torque of screws

tightening torque (Nm)	tightening torque (lb-in)
0,60	5

Stripping length

Length (mm)	--
8	STRIPPINGLENGTH

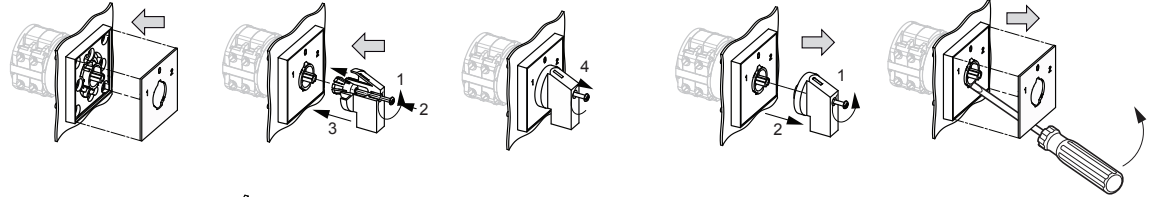
Size of conductor

composition of conductor	Min. / Max. value	No. of conductor per terminal	Cross section (mm ²) or (AWG/kcmil)	Material of the wire
solid wire	Min.	1	0.5mm ²	Copper
solid wire	Min.	2	0.5mm ²	Copper
flexible wire	Min.	1	0.75mm ²	Copper

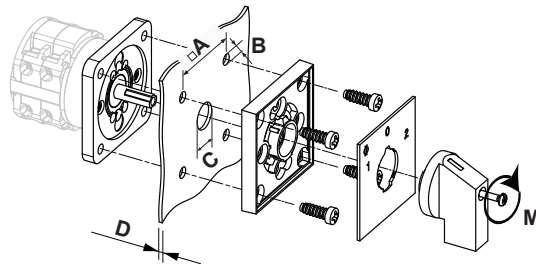
Size of conductor				
composition of conductor	Min. / Max. value	No. of conductor per terminal	Cross section (mm²) or (AWG/kcmil)	Material of the wire
flexible wire	Min.	2	0.75mm ²	Copper
flexible wire	Max.	2	2.5mm ²	Copper
flexible wire	Max.	2	AWG 14	Copper
Single-core or stranded wire	Max.	2	AWG 12	Copper
Single-core or stranded wire	Max.	2	2.5mm ²	Copper
flexible wire with ferrule according to DIN 46228	Max.	2	2.5mm ²	Copper
flexible wire with ferrule according to DIN 46228	Min.	1	0.5mm ²	Copper
flexible wire with ferrule according to DIN 46228	Min.	2	0.5mm ²	Copper






Mounting-E

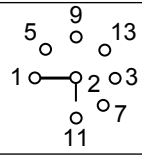
Mounting-E



BF_C_E



IP - Code front side		IP40
Stages		1,00 - 12,00
A		36,00 mm
B		5,00 mm
C		8,00 - 19,00 mm
D		<= 4,00 mm
M		0,50 Nm



F110

