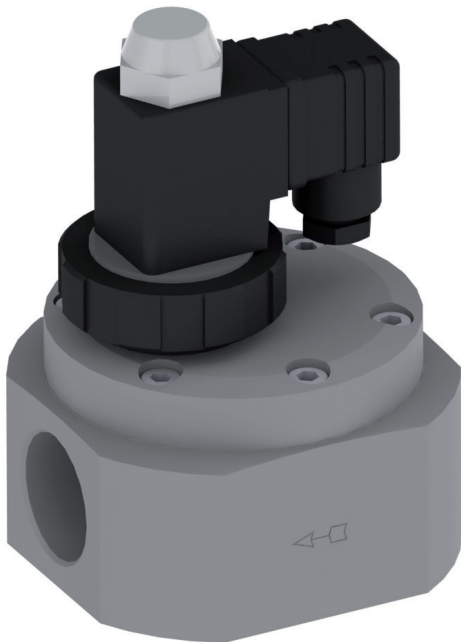


## 2 / 2 - way plastic solenoid valve - Type 160



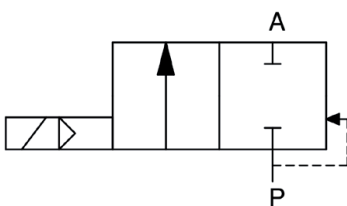
### Characteristics

- Seat valve with diaphragm plunger sealed
- DN 15 – 50
- 0,3 – 6,0bar (see table)
- Body material PVC, PP, PTFE
- Seal materia I EPDM, FKM
- Temperature see pressure- / temperature graph & temperature range elastomeric materials \*
- ambient: 0 up to max. +50°C
- Connection PVC: cementing socket  
PP: welding socket  
PTFE: threaded socket
- Electr . connection plug acc. DIN EN 175301 -803 form A
- Nominal voltage 230V 50Hz, 24V DC, special voltages
- Voltage tolerance + / - 10% acc. VDE 0580
- Power consumption 230V 50Hz: 6,5VA  
24V DC: 5W
- Duty factor 100% ED
- Protection class IP 65 with plug mounted
- Solenoid preferably in upright position

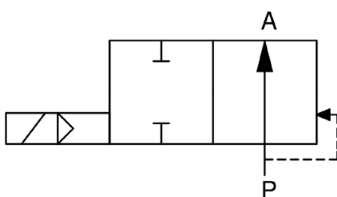
### Body Materials:



Function A: NC (normally closed)



function B: NO (normally open)



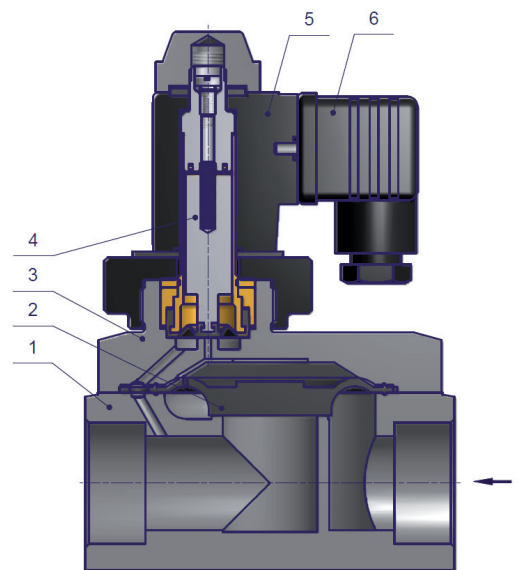
## 2 / 2 - way plastic solenoid valve - Type 160

Sectional drawing

Body Materials:



1. Valve body
2. Diaphragm
3. Top cover
4. Pilot unit
5. Solenoid
6. Plug

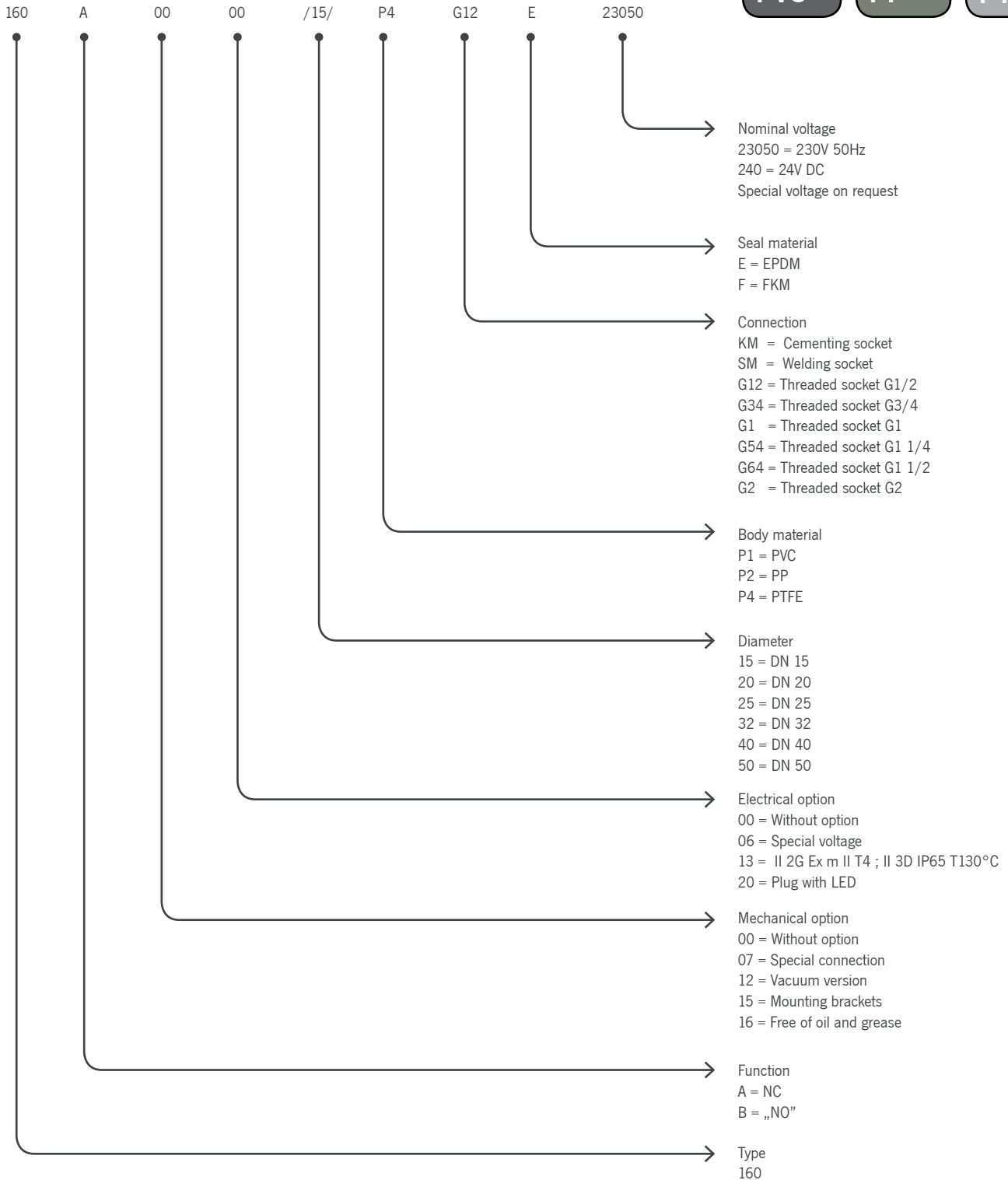


DN	Pressure range (bar)	Connection (mm)			Flow rate (m <sup>3</sup> /h)	Weight (kg)
		PVC Cementing socket	PP Welding socket	PTFE Threaded socket		
15	0,3 - 6,0	d 20	d 20	G1/2	3,1	0,6
20	0,3 - 6,0	d 25	d 25	G3/4	9,8	1,0
25	0,3 - 6,0	d 32	d 32	G1	10,3	1,0
32	0,3 - 6,0	d 40	d 40	G1 1/4	23,0	1,9
40	0,3 - 6,0	d 50	d 50	G1 1/2	24,0	1,9
50	0,3 - 6,0	d 63	d 63	G2	29,6	2,8

## 2 / 2 - way plastic solenoid valve - Type 160

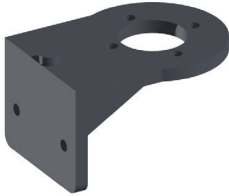
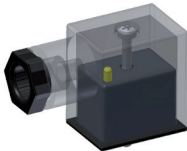
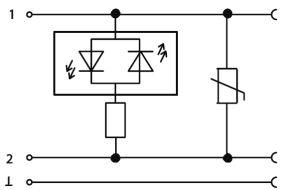



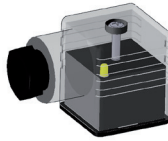

Type code

Body Materials:



## 2 / 2 - way plastic solenoid valve - Type 160

### Accessories

	<p>Mounting brackets Mechanical option = 15</p>	
	<p>Plug with LED Electrical option = 20</p>	
	<p>Explosion proof II 2G Ex m II T4 II 3D IP65 T130°C Electrical option = 13</p>	<p>Operating pressure is reduced by 20% in Ex specification</p>
	<p>Plug with cable</p>	
	<p>Plug M12 x 1</p>	
	<p>Plug with power reduction 24V , form A Electrical option = 07</p>	

- We gladly coordinate further options and accessories according to your requirements

## 2 / 2 - way plastic solenoid valve - Type 160

pressure loss

