



# SOUTHERN CALIFORNIA HYDRAULIC ENGINEERING CORPORATION

DESIGNERS AND MANUFACTURERS OF HYDRAULIC & PNEUMATIC EQUIPMENT

1130 COLUMBIA STREET BREA, CALIFORNIA 92821

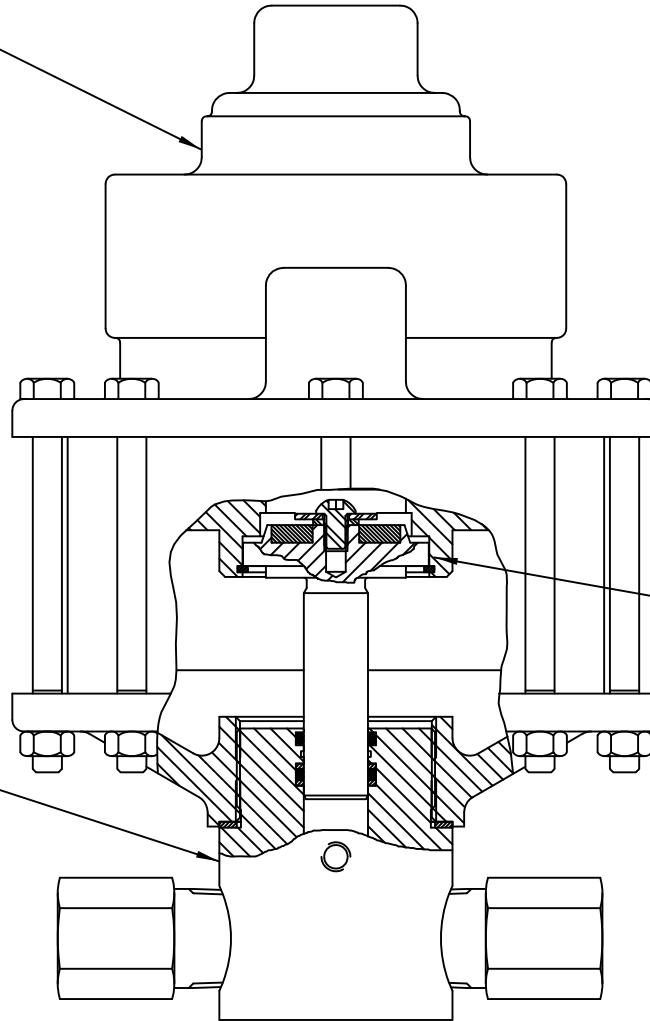
REV: A, 03/06/12

## NON-LUBE PUMP ASSEMBLY 10-500AW015 THRU W060

## LUBE PUMP ASSEMBLY 10-500AW015L THRU W060L

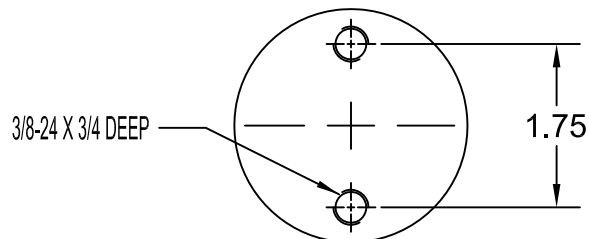
(NOTES: P/N 10-500AW015\_W060 WAS D500AB25\_B105)

AIR MOTOR ASSEMBLY  
11-5113ADL0 FOR NON-LUBE PUMP  
11-5113A000 FOR LUBE PUMP



RETAINING RING  
12-R200S000 (REF)

HYDRAULIC ASSEMBLY  
11-5026W015A  
11-5026W018A  
11-5026W020A  
11-5026W030A  
11-5026W040A  
11-5026W045A  
11-5026W060A



MOUNTING DIMENSIONS



# SOUTHERN CALIFORNIA HYDRAULIC ENGINEERING CORPORATION

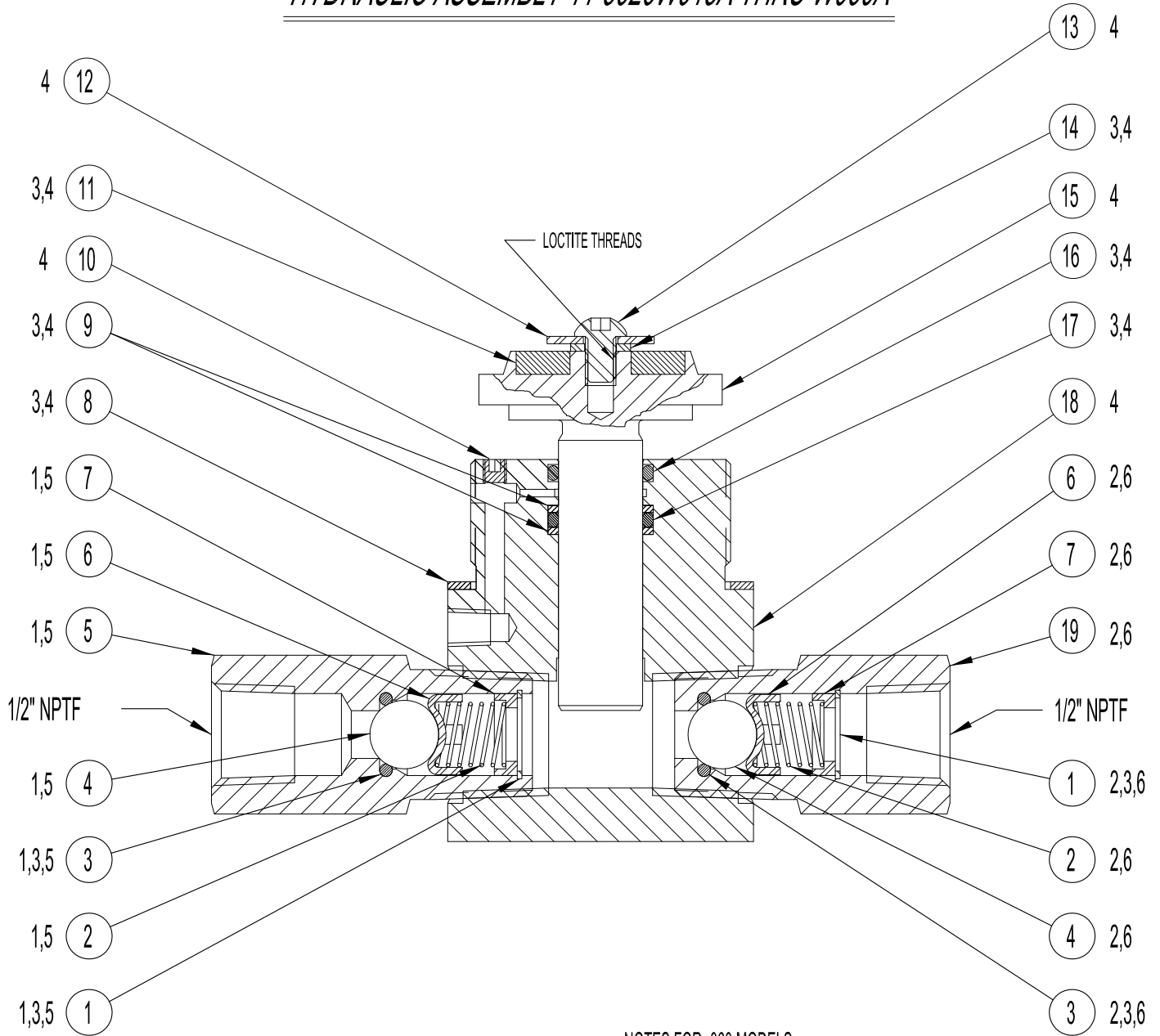
DESIGNERS AND MANUFACTURERS OF HYDRAULIC & PNEUMATIC EQUIPMENT

1130 COLUMBIA STREET BREA, CALIFORNIA 92821

WWW.SCHYDRAULIC.COM

REV: B, 11/10/2014

## HYDRAULIC ASSEMBLY 11-5026W015A THRU W060A



### NOTES FOR -060 MODELS:

4. INCLUDED IN 11-5027WXXXA PISTON & CYLINDER ASSEMBLY.

5. INCLUDED IN 11-5024S060 INLET CHECK VALVE ASSY. FOR -060 MODEL.

3. INCLUDED IN 11-5148NXXXA HYDRAULIC REPAIR KIT.

6. INCLUDED IN 11-5023S060 OUTLET CHECK VALVE ASSY. FOR -060 MODEL.

2. INCLUDED IN 11-5023S000 OUTLET CHECK VALVE ASSY. FOR -015 THRU -045 MODEL.

1. INCLUDED IN 11-5024S000 INLET CHECK VALVE ASSY. FOR -015 THRU -045 MODEL.

\* XXX : REPRESENTS PUMP ASSEMBLY RATIO NUMBER

### NOTES:



# SOUTHERN CALIFORNIA HYDRAULIC ENGINEERING CORPORATION

DESIGNERS AND MANUFACTURERS OF HYDRAULIC & PNEUMATIC EQUIPMENT

1130 COLUMBIA STREET BREA, CALIFORNIA 92821

WWW.SCHYDRAULIC.COM

## BILL OF MATERIALS: 11-5026W015A\_W060A

DRAWING NUMBER & DESCRIPTION: 11-5026W015A THRU W060A HYDRAULIC ASSEMBLY

REVISION: B, 11/10/14

ITEM	QTY	PART NUMBER	DESCRIPTION	W015	W018	W020	W030	W040	W045	W060	REF. NO.
1	2	P10202-068	RETAINING RING	X	X	X	X	X	X	X	12-R068S000
2	2	11-5013S000	SPRING	X	X	X	X	X	X		10-450-13
2	2	D10862	SPRING							X	
3	2	P11003-112	O-RING, BUNA	X	X	X	X	X	X	X	
4	2	12-0440S562	CHECK BALL	X	X	X	X	X	X	X	
5	1	11-5019S000	SEAT-INLET	X	X	X	X	X	X	X	10-450-19
6	2	11-5034S002	BALL GUIDE	X	X	X	X	X	X	X	10-450-34
7	2	11-5017S000	SPRING GUIDE	X	X	X	X	X	X	X	10-450-17
8	1	11-5028N000	GASKET	X	X	X	X	X	X	X	10-450-28
9	2	P11227-214	BACK-UP	X							
9	2	P11227-213	BACK-UP		X						
9	2	P11227-212	BACK-UP			X					
9	2	P11227-115	BACK-UP				X				
9	2	P11227-114	BACK-UP					X			
9	2	P11227-113	BACK-UP						X		
9	2	P11227-112	BACK-UP							X	
10	1	P10226-019	SET SCREW	X	X	X	X	X	X	X	12-94105A824
11	1	11-5051P000	PISTON BUMPER	X	X	X	X	X	X	X	10-450-51
12	1	12-25N87WF1Z	FENDER WASHER	X	X	X	X	X	X	X	
13	1	12-25F37SBC45Z	BUTTON HD.CAP SCREW	X	X	X	X	X	X	X	
14	1	P10212-025	HEL. SPRING LOCK WASHER	X	X	X	X	X	X	X	
15	1	11-5010S015	HYDRAULIC PISTON	X							10-450-10-1.5
15	1	11-5010S018	HYDRAULIC PISTON		X						10-450-10-1.75A
15	1	11-5010S020	HYDRAULIC PISTON			X					10-450-10-2A
15	1	11-5010S030	HYDRAULIC PISTON				X				10-450-10-3A
15	1	11-5010S040	HYDRAULIC PISTON					X			10-450-10-4A
15	1	11-5010S045	HYDRAULIC PISTON						X		10-450-10-4.5A
15	1	11-5010S060	HYDRAULIC PISTON							X	10-450-10-6A
16	1	P11015-214	O-RING, TEFLON	X							12-6227T019
16	1	P11015-213	O-RING, TEFLON		X						12-6227T018
16	1	P11015-212	O-RING, TEFLON			X					12-6227T017
16	1	P11015-115	O-RING, TEFLON				X				12-6227T013
16	1	P11015-114	O-RING, TEFLON					X			12-6227T012
16	1	P11015-113	O-RING, TEFLON						X		12-6227T011
16	1	P11015-112	O-RING, TEFLON							X	12-6227T010
17	1	P11000-214	O-RING, BUNA	X							12-6227E019
17	1	P11000-213	O-RING, BUNA		X						12-6227E018
17	1	P11000-212	O-RING, BUNA			X					12-6227E017
17	1	P11000-115	O-RING, BUNA				X				12-6227E013
17	1	P11000-114	O-RING, BUNA					X			12-6227E012
17	1	P11000-113	O-RING, BUNA						X		12-6227E012
17	1	P11000-112	O-RING, BUNA							X	12-6227E010
18	1	11-5011B015A	HYDRAULIC CYLINDER	X							10-450-11-1.5A
18	1	11-5011B018A	HYDRAULIC CYLINDER		X						10-450-11-1.75A
18	1	11-5011B020A	HYDRAULIC CYLINDER			X					10-450-11-2A
18	1	11-5011B030A	HYDRAULIC CYLINDER				X				10-450-11-3A
18	1	11-5011B040A	HYDRAULIC CYLINDER					X			10-450-11-4A
18	1	11-5011B045A	HYDRAULIC CYLINDER						X		10-450-11-4.5A
18	1	11-5011B060	HYDRAULIC CYLINDER							X	10-450-11-6A
19	1	11-5020S000	SEAT- OUTLET	X	X	X	X	X	X	X	10-450-11-20

WHERE USED: 10-500AW015\_W060, D500AB25\_B105  
10-500AW015L\_W060L