

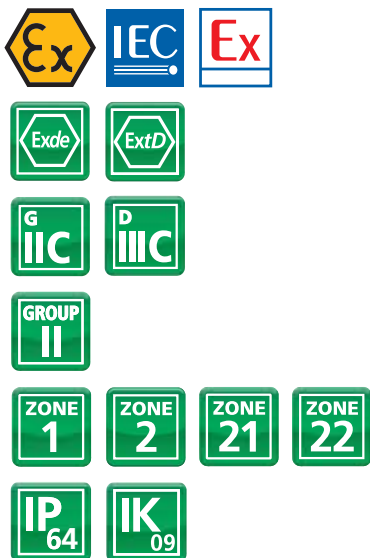


EVS Range

Fluorescent fitting with easy disconnect



Approvals / Characteristics



Features

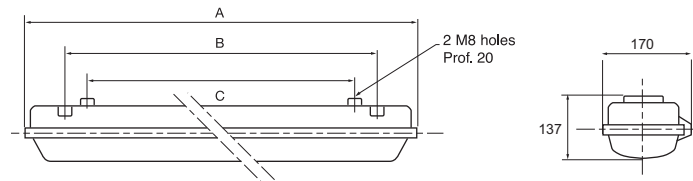
- Easy disconnect for safer maintenance out of zones
- Main body constructed of a GRP for high impact strength
- Polycarbonate diffuser to resist harsh environments
- Automatic switch off upon opening for safe maintenance
- All components mounted on hinged and removable gear tray which gives easy access for installation and maintenance
- Including accessories, cable gland & fixing brackets

Certification & Standards

Approved to: EN60079-0, 60079-1, 60079-5, 60079-7, EN61241-1
 EC TYPE Examination Certificate:
 LCIE 11 ATEX 3065X
 IEC Ex LCI 11.0053X
 Ex II 2 G
 Ex de IIC T4 Gb for $\leq -40^{\circ}\text{C}$ to $\leq +60^{\circ}\text{C}$
 Ex de IIC T5 Gb for $\leq -40^{\circ}\text{C}$ to $\leq +35^{\circ}\text{C}$
 Ex II 2 D
 Ex tD IIIC A21 T85°C Db IP64
 Glow wire test: 960°C EN60598-2-22
 Safe operating temperature range: -20°C to $+50^{\circ}\text{C}$

Dimensions

Technical Specifications



Type	Wiring Configuration	Rating (W)	Nominal Current (A)	Dimensions (mm)			Weight (kg)
				A	B	C	
EVS120-0000	3 Wire Loop	1 x 18	0.09	785	432	400	5.5
EVS120-A000	5 Wire Loop	1 x 18	0.09	785	432	400	5.5
EVS120-B000	5 Wire Through	1 x 18	0.09	785	432	400	5.5
EVS140-0000	3 Wire Loop	1 x 36	0.17	1370	900	700	7.5
EVS140-A000	5 Wire Loop	1 x 36	0.17	1370	900	700	7.5
EVS140-B000	5 Wire Through	1 x 36	0.17	1370	900	700	7.5
EVS165-0000	3 Wire Loop	1 x 58	0.26	1670	900	700	9
EVS165-A000	5 Wire Loop	1 x 58	0.26	1670	900	700	9
EVS165-B000	5 Wire Through	1 x 58	0.26	1670	900	700	9
EVS220-0000	3 Wire Loop	2 x 18	0.17	785	432	400	6.5
EVS220-A000	5 Wire Loop	2 x 18	0.17	785	432	400	6.5
EVS220-B000	5 Wire Through	2 x 18	0.17	785	432	400	6.5
EVS240-0000	3 Wire Loop	2 x 36	0.33	1370	900	700	8.5
EVS240-A000	5 Wire Loop	2 x 36	0.33	1370	900	700	8.5
EVS240-B000	5 Wire Through	2 x 36	0.33	1370	900	700	8.5
EVS265-0000	3 Wire Loop	2 x 58	0.5	1670	900	700	10
EVS265-A000	5 Wire Loop	2 x 58	0.5	1670	900	700	10
EVS265-B000	5 Wire Through	2 x 58	0.5	1670	900	700	10

*EVS... C000 - 3 Wire loop & continuity plate

*EVS... E000 - 5 Wire through & 2 continuity plates

Enclosure

Fibreglass reinforced polyester body
Polycarbonate diffuser
EPDM cellular gaskets

Fixing

Standard: V015 - 2 Zinc Plated Steel brackets for ceiling mounting

Rated voltages

Standard: electronic ballast
AC 220-240V, 50-60Hz
DC 220-240V
For other voltages contact Sales

Power factor

Superior to 0.98

Cable entries

Standard: Three M20 entries included
Two M20 Nylon plugs and
One cable gland - ISO M20 Nylon, diameter 8-13mm for non-armoured cable
For armoured cable - continuity plate option:
Nickel Brass cable gland (1 or 2 according to number of plates)

Terminal block

Up to 4mm² (rigid wire), 2.5mm² (flexible wire)
Lamps (order separately)
Tube G13 bi-pin T8 Ø 26 coolwhite 4000°k

Spares & Fixings Accessories see pages 94-99



EXB Conduit 136



Nylon Stopping Plugs 164



XB100 Range 108



Exe Nylon Gland 166

Related Products