

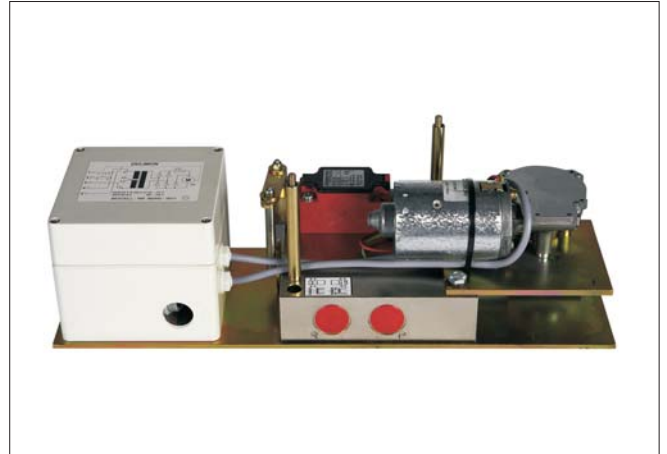
**Product description**  
**Change-over**  
**valve SA-V**

**APPLICATION**

For hydraulic systems, particularly dual-line centralized systems.  
For use SA-V as 3/2-way valve close outlet B.

**PRODUCT CHARACTERISTICS**

- Function 4/2-way
- Drive by direct-current geared motor
- Working pressure max. 400 bar



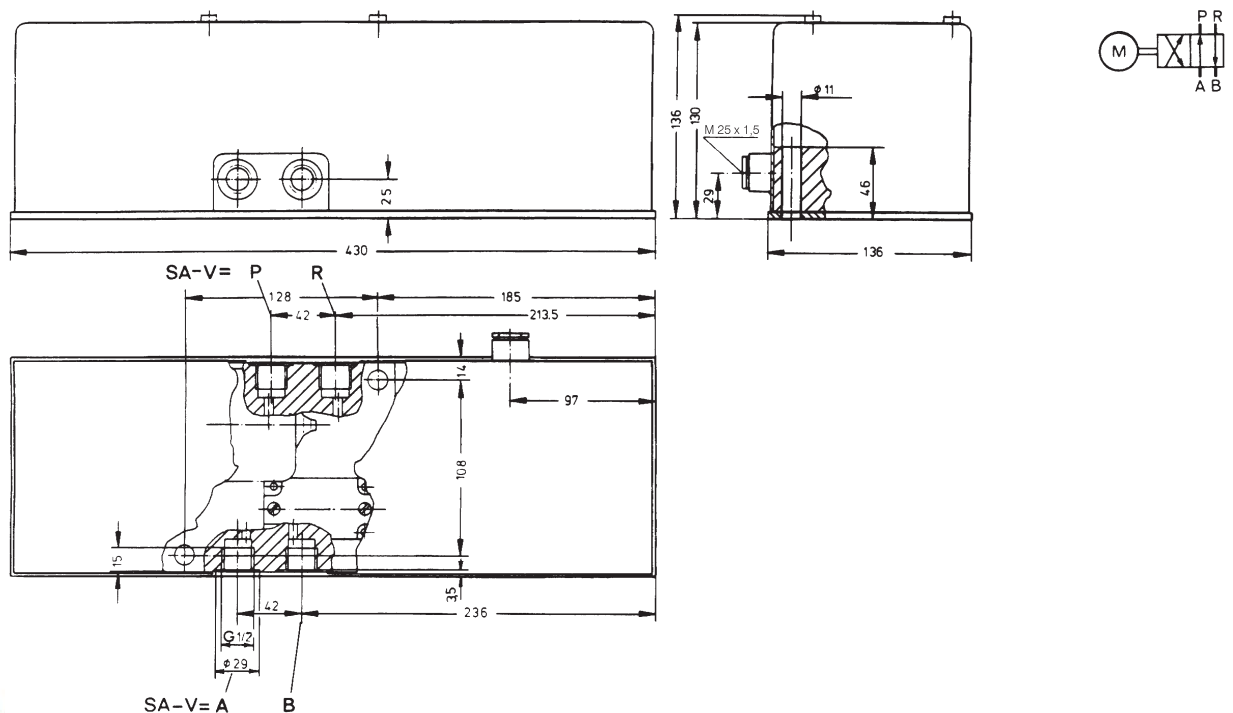
**DESIGN**

Operation by means of a geared D.C. motor with high torque ensuring reliable action even under unfavorable operating conditions (e.g. low temperatures or tough lubricant).

Because of the short action times, the plunger passes through critical valve settings with little overlap, at high speed, thereby avoiding premature wear.

Each of the plunger end positions is electrically monitoring by a limit switch.

The motor's overrun and direction of rotation have no effect on the limit switch setting of the precision of the change-over. A transformer, rectifier and automatic cut-out are incorporated, for connection to a AC 110-127V or 200-240V supply.



<b>A. VALVE TYPE</b>	<b>Code</b>
----------------------	-------------

SAV

<b>B. OPERATING VOLTAGE</b>	<b>Code</b>
-----------------------------	-------------

110 - 127 and 200 - 240 V AC / 50/60Hz  
24 V DC

11  
24

<b>C. REVISION</b>	<b>Code</b>
--------------------	-------------

Status A

A

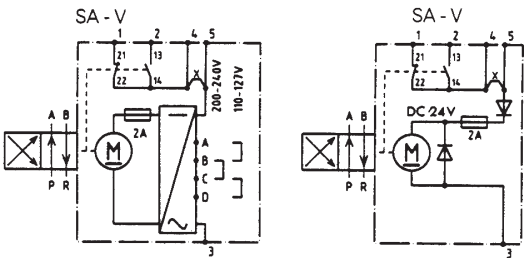
<b>D. ACCESSORIES</b>	<b>Code</b>
-----------------------	-------------

without

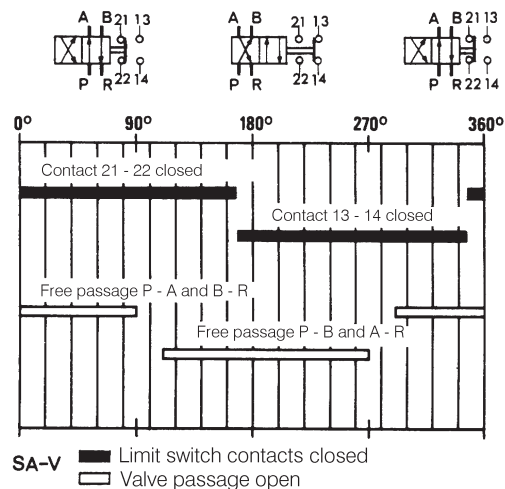
00

<b>SPECIFICATION</b>
----------------------

Working pressure max.: \_\_\_\_\_ 400 bar  
 Temperature range : \_\_\_\_\_ - 20° C up to + 80° C  
 Action time : \_\_\_\_\_ approx. 0.5 s  
 Angle of rotation : \_\_\_\_\_ 180°  
 Tightening torque : \_\_\_\_\_ 18 Nm  
 Torque : \_\_\_\_\_ 4 Nm  
 Operating voltage : \_\_\_\_\_ 110 - 127 and 200 - 240 V AC; 24 V DC  
 Cable gland . \_\_\_\_\_ M 25 x 1.5  
 Power consumption max.: \_\_\_\_\_ 42 W  
 Protection system : \_\_\_\_\_ IP 65  
 Installation position : \_\_\_\_\_ optional  
 Weight : \_\_\_\_\_ 13 kg  
 Connection diagram:



Circuit diagram



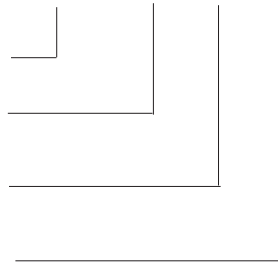
Change in valve setting and switch position



**EXAMPLE OF ORDER**

Code					
S	A	V	2	4	A 0 0

<b>Valve type SA-V</b>	Code: SAV
<b>Operating voltage</b> 24 V DC	Code: 24
<b>Revision</b> Status A	Code: A
<b>Accessories</b> without	Code: 00



**DELIMON**

**Zentrale**

Arminstraße 15  
D-40227 Düsseldorf  
Postfach 10 20 52  
D-40011 Düsseldorf  
Telefon: +49 211 7774 0  
Telefax: +49 211 7774 210  
kontakt@bijurdelimon.com  
www.bijurdelimon.com

**DELIMON**

**Niederlassung**

Am Bockwald 4  
D-08344 Grünhain-Beierfeld

**DELIMON**

**Österreich**

Am Spitz 2-3 / Schloßhofer Str. 4-6  
Stiege 4, Top 20  
A-1210 Wien  
Telefon: +43 1 585 66 17  
Telefax: +43 1 585 66 17 50  
kontakt@bijurdelimon.com  
www.bijurdelimon.com

**LUBRIMONSA**

**Spain**

Avda. Txori-Erri 38  
48150 Sondica - (Vizcaya)  
Teléfono: +34 94 453 20 00  
Fax: +34 94 453 25 00  
spain@bijurdelimon.com  
www.bijurdelimon.com

**DELIMON-Denco Lubrication**

**DELIMON-Cooling**

**United Kingdom**

Ramsden Court, Ramsden Road  
Rotherwas Industrial Estate  
Hereford, HR2 6LR  
Phone: +44 (0) 1432 365 000  
Fax: +44 (0) 1432 365 001  
info@delimon.co.uk  
www.bijurdelimon.com

**BIJUR Products, Inc.**

**France**

BP 50  
ZI de Courtabœuf  
5, Avenue de l'Atlantique  
91942 Les Ulis Cedex  
Tél.: +33 1 692 985 85  
Fax: +33 1 690 776 27  
contact@bijurdelimon.com  
www.bijurdelimon.com

*Für reibungslose Bewegung  
For smooth motion*

