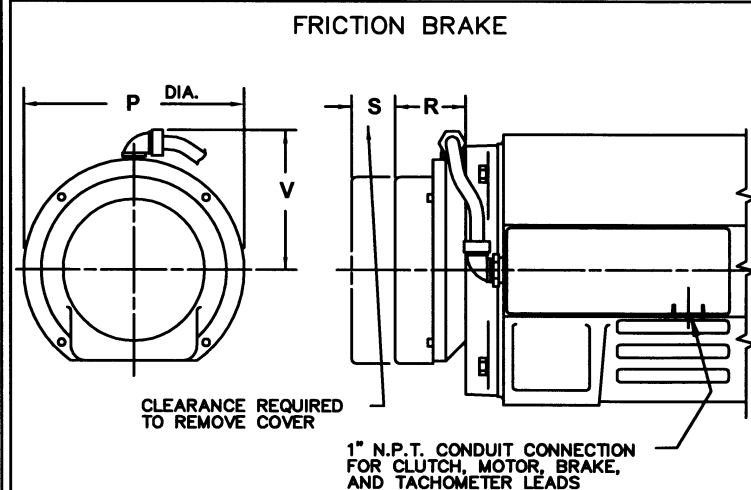
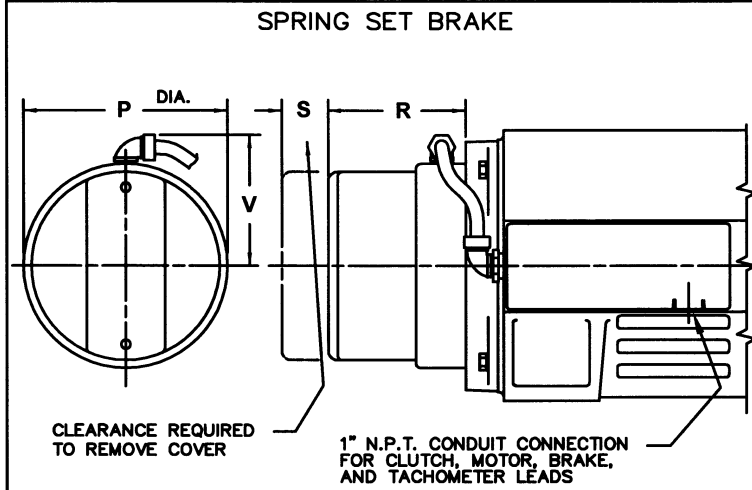
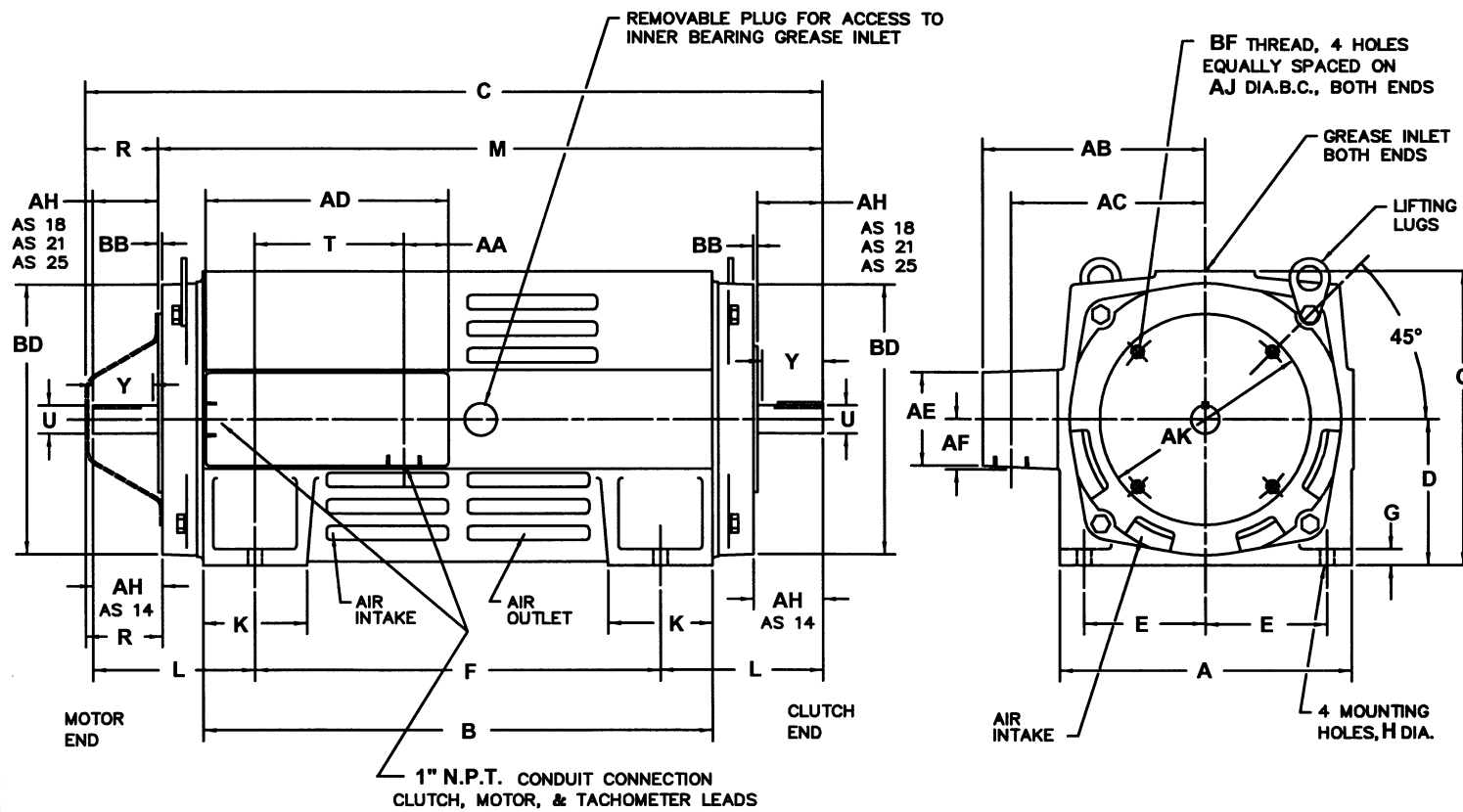


STANDARD

MODIFICATIONS

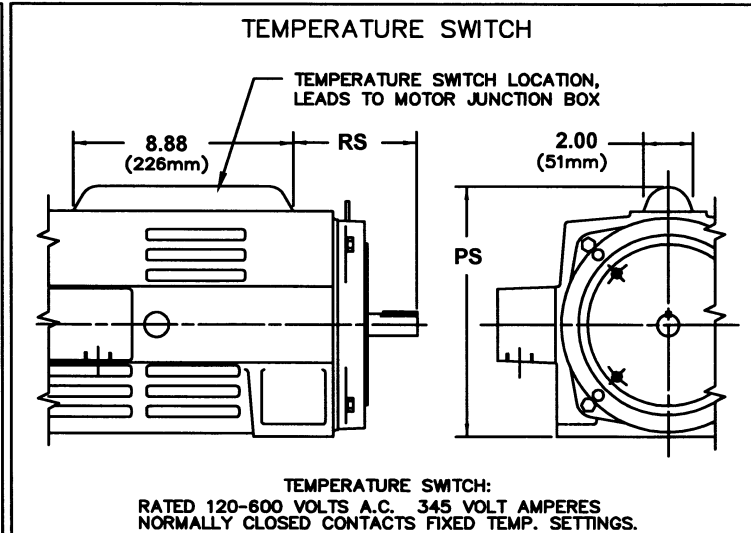
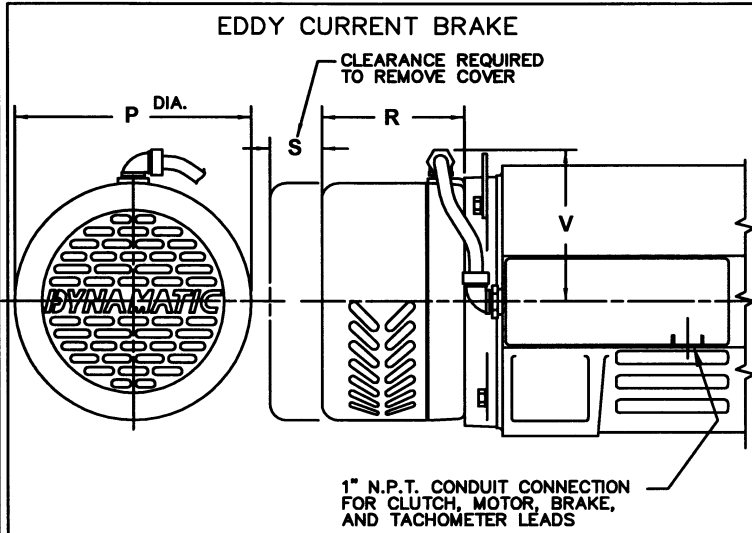


MODEL AS	P	R	S	V	MODEL AS	P	R	S	V
14 SF	6.82	4.62	3.12	4.50	21 SF	9.00	6.62	4.00	5.75
	173	117	79	114		229	168	102	146
18 SF	9.00	6.82	4.00	5.75	25 SF	9.00	7.87	4.00	5.75
	229	168	102	146		229	200	102	146

MODEL AS	P	R	S	V	MODEL AS	P	R	S	V
14 F	7.42	2.46	1.10	4.96	21 F	11.52	4.45	2.68	6.00
	188	62	28	126		293	113	68	152
18 F	7.42	3.11	1.10	4.96	25 F	11.52	4.45	2.68	6.00
	188	79	28	126		293	113	68	152

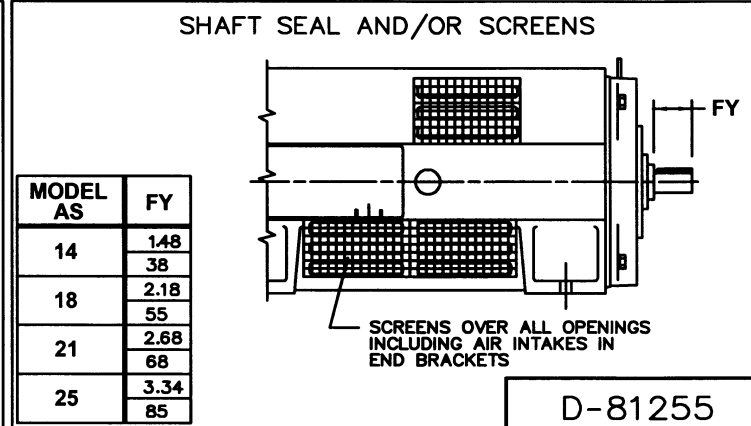
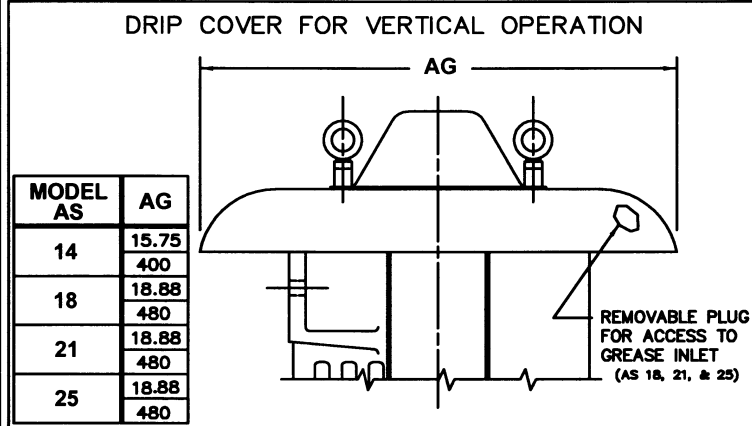
MODEL AS	A	B	C	D _⊙	E	F	G	H	K	L	M	O	R	T	U	Y	SHAFT EXTENSION KEY
14	9.00	15.72	22.72	4.50	3.75	12.52	.50	.50	3.20	5.00	20.38	9.06	2.34	4.67	.8750	1.94	.18 SQ.x 1.38 LG.
	229	399	577	114	95	318	13	13	81	127	518	230	59	119	22.225	49	4.76 SQ.x 35 LG.
18	10.50	17.60	27.90	5.25	4.25	13.75	.50	.50	3.75	6.25	23.60	10.75	4.05	4.43	1.1250	2.50	.25 SQ.x 1.75 LG.
	267	447	709	133	108	349	13	13	95	159	599	273	103	113	28.575	64	6.35 SQ.x 44 LG.
21	12.50	18.60	30.27	6.25	5.00	14.12	.62	.62	3.56	7.62	26.22	12.62	4.05	5.58	1.3750	3.00	.31 SQ.x 2.38 LG.
	318	472	769	159	127	359	16	16	90	194	666	321	103	142	34.925	76	7.87 SQ.x 60 LG.
25	14.00	17.75	32.84	7.00	5.50	15.06	.62	.62	3.30	8.75	28.79	14.38	4.05	6.20	1.6250	3.62	.38 SQ.x 2.88 LG.
	356	451	834	178	140	383	16	16	84	222	731	365	103	157	41.275	92	9.65 SQ.x 73 LG.

MODEL AS	AA	AB	AC	AD	AE	AF	AH	AJ	AK _Δ	BB	BD	BF	WT.
14	1.32	7.06	6.00	7.50	2.88	1.48	2.12	5.88	4.499	.12	8.38	3/8-16	155
	34	179	152	190	73	38	54	149	114.3	3	213	9.52x1.58	70
18	2.06	7.80	6.74	8.32	2.88	1.48	2.62	7.25	8.499	.25	10.06	1/2-13	247
	52	198	171	211	73	38	67	184	215.9	6	255	12.70x1.95	112
21	1.38	8.87	7.57	8.81	3.76	1.92	3.12	7.25	8.499	.27	11.88	1/2-13	380
	35	225	192	224	96	49	79	184	215.9	7	302	12.70x1.95	172
25	1.62	9.87	8.57	8.81	3.76	1.92	3.75	7.25	8.499	.27	13.32	1/2-13	530
	41	251	218	224	96	49	95	184	215.9	7	338	12.70x1.95	240



MODEL AS	P	R	S	V	MODEL AS	P	R	S	V
14B	7.38	4.11	2.92	5.19	21B	9.50	5.84	4.56	6.19
	187	104	74	132		241	148	116	157
18B	9.50	5.84	4.56	6.19	25B	10.88	7.31	6.06	6.88
	241	148	116	157		276	186	154	175

MODEL AS	PS	RS	MODEL AS	PS	RS
14	10.06	5.00	21	13.62	8.77
	256	127		346	223
18	11.75	7.31	25	15.38	9.56
	298	186		391	243



MODEL AS	AG
14	15.75
	400
18	18.88
	480
21	18.88
	480
25	18.88
	480

MODEL AS	FY
14	148
	38
18	218
	55
21	268
	68
25	334
	85

- NOTES:
- OVERALL DIMENSION ON UNITS WITH MODIFICATIONS WILL BE THE TOTAL OF M DIMENSION PLUS R DIMENSION.
 - UNIT MAY BE OPERATED VERTICALLY, (PREFER MOTOR END OUTPUT SHAFT UP).
 - DIMENSIONS ARE SHOWN IN INCHES AND MILLIMETERS. WEIGHT IS IN POUNDS & KILOGRAMS.
 - ⊙ D DIMENSION WILL NEVER BE EXCEEDED. WHEN EXACT DIMENSION IS NEEDED SHIMS UP TO .03 MAY BE REQUIRED.
 - U SHAFT DIAMETER TOLERANCE 1.50 AND SMALLER +.0000/-0.0005. OVER 1.50 +.000/-0.001.
 - ⊠ Y AND FY DIMENSIONS ARE MAXIMUM USEABLE SHAFT LENGTHS.
 - Δ AK PILOT DIAMETER TOLERANCE +.000/-0.002.
 - AJ, AK AND KEY DIMENSIONS ARE THE SAME FOR BOTH ENDS.