

Bevel helical Gear reducer – G series

Application given data

Required output speed	[min ⁻¹]	9,03
Required input power	[kW]	15,0

Designation: R C2I 250 UO2A - 156 B3
Mounting position B3, $n_1 = 1400$ [min⁻¹]

Standard product : Yes

Accessories and special designs

Backstop device free rotation black arrow (DA2)

Reducer/Gearmotor specifications

Transmission ratio i		156
Output speed n_2	[min ⁻¹]	9,00
Input speed n_1	[min ⁻¹]	1400
Input power P_1	[kW]	15,0
Output torque M_2	[N m]	15025
Service factor f_s		1,72
Efficiency		0,94
Mass of gear reducer (without motor)	[kg]	563
Provisional lubricant quantity	[l]	47,0
ISO viscosity grade (T 10-40 °C)	[cSt]	320

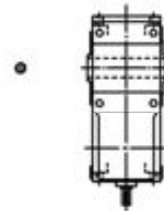
Nominal Data

Nominal input power P_{N1}	[kW]	26,0
Nominal output power P_{N2}	[kW]	24,4
Nominal output torque M_{N2}	[N m]	25910
Maximum output torque M_{2max}	[N m]	41456

Verifications

Safety factor on M_{2peak}	N.A.
Thermal power verification	N.A.
External loads verificaton	N.A.

Top view with M.P. B3



N.A: Not Applied

The results of calculations in this document have no validity in terms of warranty. Computing: a) are theoretical, b) are based on the assumptions for optimal working conditions specified on Rossi catalogues, c) they rely on the truthfulness of given input data for which the customer is the only responsible, d) any omitted data or not taken into account by the customer voids the entire report. All contents, and information in this document are sole property of Rossi S.p.A. It cannot be disclosed for purposes other than the scope for which it has been generated under the agreement between the Customer and an authorized Rossi representative. It cannot be reproduced (in whole or in part) without explicit written permission by Rossi S.p.A. legal representative, and in this case the intellectual property of the document remains solely of Rossi S.p.A.

Turkey

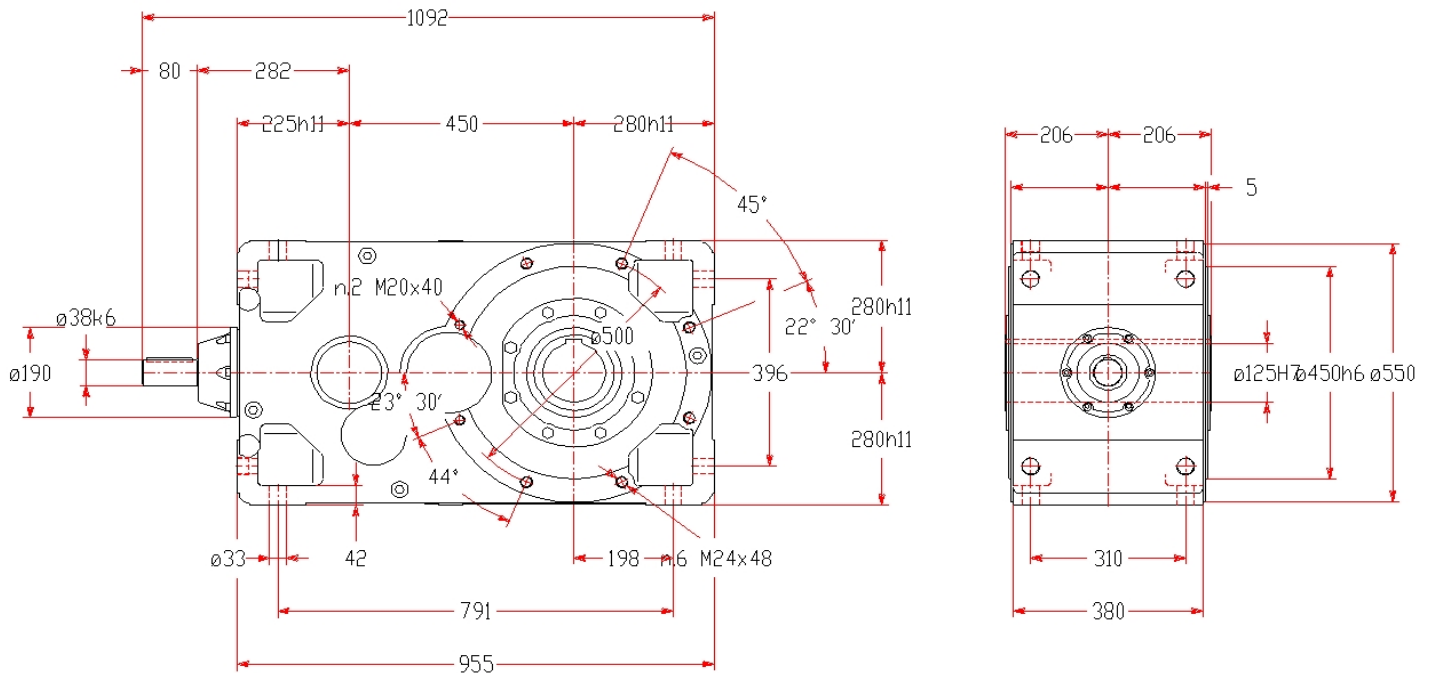
Rossi Turkey & Middle East
e-mail: info.turkey@rossi-group.com
www.rossi-group.com/turkey

Rossi S.p.A.

Via Emilia Ovest 915/A - Modena - Italy
Tel. 059 330288 - Fax 059 827774
info@rossi-group.com - www.rossi-group.com

Bevel helical Gear reducer - catalogue G

Main Dimensions [mm] (only for standard gearbox, in case of non-standard design see the drawing on the next page)



Informations and warnings:

Mounting nuts: M30 UNI 5588. With screw UNI 5737, see pag. 370 Cat. G series

Moment of inertia (of mass): J_1 [kg m²] = 0,0038

The results of calculations in this document have no validity in terms of warranty. Computing: a) are theoretical, b) are based on the assumptions for optimal working conditions specified on Rossi catalogues, c) they rely on the truthfulness of given input data for which the customer is the only responsible, d) any omitted data or not taken into account by the customer voids the entire report. All contents, and information in this document are sole property of Rossi S.p.A. It cannot be disclosed for purposes other than the scope for which it has been generated under the agreement between the Customer and an authorized Rossi representative. It cannot be reproduced (in whole or in part) without explicit written permission by Rossi S.p.A. legal representative, and in this case the intellectual property of the document remains solely of Rossi S.p.A.

Turkey

Rossi Turkey & Middle East
e-mail: info.turkey@rossi-group.com
www.rossi-group.com/turkey

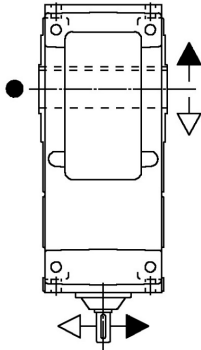
Rossi S.p.A.

Via Emilia Ovest 915/A - Modena - Italy
Tel. 059 330288 - Fax 059 827774
info@rossi-group.com - www.rossi-group.com

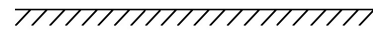
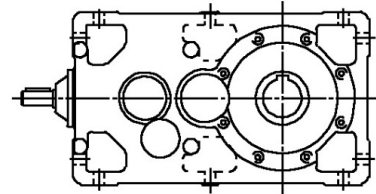
Bevel helical Gear reducer - catalogue G

Design: UO2A

Mounting position: B3

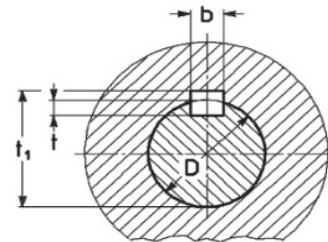
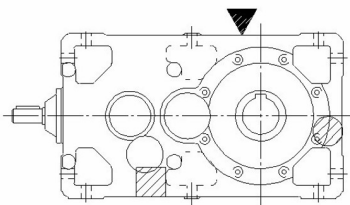


● Groove side



Plugs position (supplied without oil as standard)

Standard hollow low speed shaft

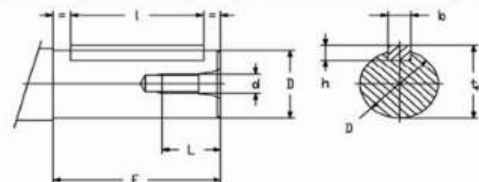


D		b x h x l	b	t	t ₁
ø125	H7	32 x 18 x 320	32	11	132,4

- ▼ = filler plug (in view/not in view)
- = level plug (in view/not in view)
- ▨ = drain plug (in view/not in view)

High speed shaft: ø38k6

D	E	d	b x h x l	t ₀
ø38	k6 80 (58)	M10	10 x 8 x 70 (50)	41
ø48	k6 110 (82)	M12	14 x 9 x 90 (70)	52
ø55	m6 110	M12	16 x 10 x 90	60
ø70	m6 140 (105)	M16	20 x 12 x 125 (90)	75



The 3D drawing of following page, is in PDF format as it is meant only to show the overall design of the Gear reducer/Gearmotor. The 3D drawing consistent with the chosen

The results of calculations in this document have no validity in terms of warranty. Computing: a) are theoretical, b) are based on the assumptions for optimal working conditions specified on Rossi catalogues, c) they rely on the truthfulness of given input data for which the customer is the only responsible, d) any omitted data or not taken into account by the customer voids the entire report. All contents, and information in this document are sole property of Rossi S.p.A. It cannot be disclosed for purposes other than the scope for which it has been generated under the agreement between the Customer and an authorized Rossi representative. It cannot be reproduced (in whole or in part) without explicit written permission by Rossi S.p.A. legal representative, and in this case the intellectual property of the document remains solely of Rossi S.p.A.

Bevel helical Gear reducer - catalogue G

configuration (position of plugs, type of low speed shaft, fixing holes, terminal box position, ...) can be downloaded from the "Selector", clicking the "Drawing CAD" button.

Turkey

Rossi Turkey & Middle East
e-mail: info.turkey@rossi-group.com
www.rossi-group.com/turkey

Rossi S.p.A.

Via Emilia Ovest 915/A - Modena - Italy
Tel. 059 330288 - Fax 059 827774
info@rossi-group.com - www.rossi-group.com