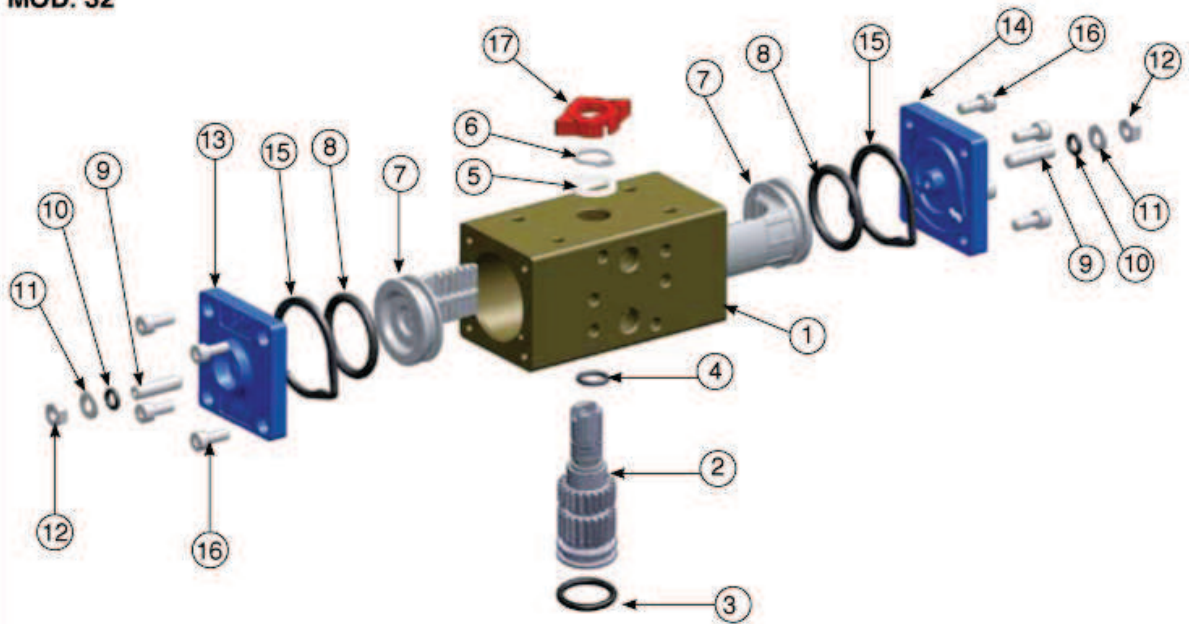
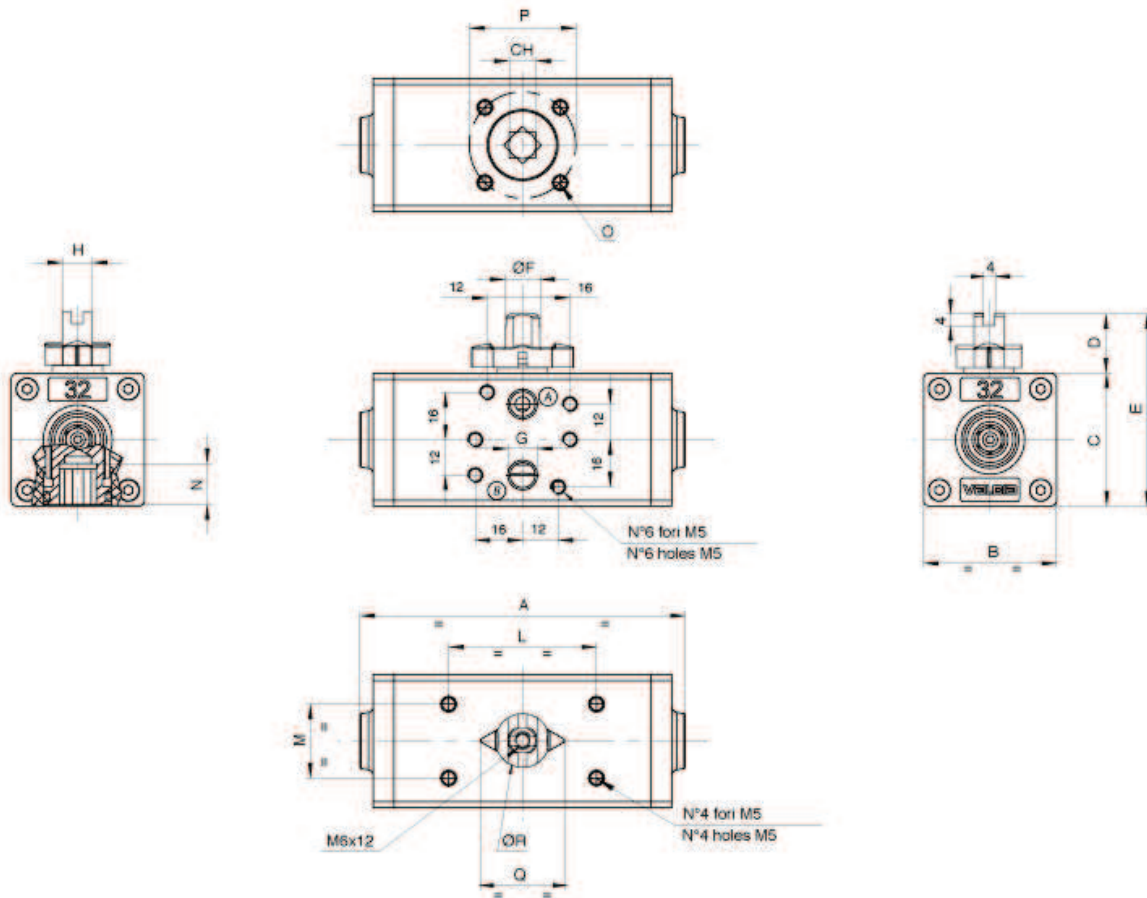


MOD. 32



ITEM	DESCRIPTION	MATERIAL	TREATMENT	Q.TA'
1	Body	Extruded aluminium	Hard anodized	1
2	Anti-blowout pinion	Steel	Nickel plated	1
• 3	O-ring	NBR		1
• 4	O-ring	NBR		1
• 5	Spacer ring	POM		1
6	Snap ring	Steel	Nickel plated	1
7	Piston	Die cast aluminium		2
• 8	O-ring	NBR		2
9	Stop bolt	Stainless steel		2
• 10	O-ring	NBR		2
11	Washer	Stainless steel		2
12	Stop bolt retaining nut	Stainless steel		2
13	Left end cap	Die cast aluminium	Painted	1
14	Right end cap	Die cast aluminium	Painted	1
15	End cap seats	NBR		2
16	End cap fixing screw	Stainless steel		8
17	Position indicator	Thermoplastic rubber TPE		1

• Parts subject to wear



A Rotazione antioraria
CCW rotation

B Rotazione oraria
CW rotation

MOD.	FORATURA ISO 5211	CH	A	B	C	D	E	OF	G ISO 7/1	H	L	M	N	O	P	Q	ϕR
32	F03	9	110	45	45	20	65	11,8	1/8"	10	50	25	12	M5x7,5	36	34,5	22

WORKING TIME (SEC)

COUNTERCLOCKWISE ROTATION (DA)	CCW	0.03
CLOCKWISE ROTATION (DA)	CW	0.03

WEIGHT CHART (KG)

DOUBLE ACTING	0.49
---------------	------

ACTUATOR AIR CONSUMPTION CHART

COUNTERCLOCKWISE ROTATION (DA&SR)	CCW	0.04
CLOCKWISE ROTATION (DA)	CW	0.03