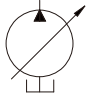
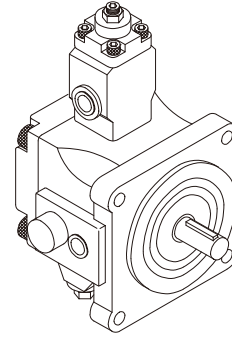


**VPKCF23**  
**VPKCF26**  
**VPKCF30**  
**VPKCF40**



SYMBOL

### FEATURES 特點

Model	Operating Pressure (Kgf / cm <sup>2</sup> )		Rated Speed (rpm)		Net Weight
			MAX	MIN	
VPKCF23	A1: 5-18 A3:30-55	A2:15-35 A4:50-70	1800	800	9.0Kg
VPKCF26	A1: 5-18 A3:30-55	A2:15-35 A4:50-70	1800	800	9.0Kg
VPKCF30	A1: 5-18 A3:30-55	A2:15-35 A4:50-70	1800	800	9.0Kg
VPKCF40	A1: 5-18 A3:30-55	A2:15-35 A4:50-70	1800	800	9.0Kg

### ORDERING CODE 訂購指引

**VPKC-F\*A\*-01-A**

① ②③ ④ ⑤ ⑥

- ① — Series Number
- ② — Flange Type
- ③ — Output Flow at 1800rpm  
23,26,30,40 (ℓ/min)
- ④ — Pressure Adjusting Range  
1:5-18    2:15-35  
3:30-55    4:50-70 (Kgf/cm<sup>2</sup>)
- ⑤ — Shaft Type
- ⑥ — Type of Suction Port & Discharge Port Type  
A or No Marking: PT  
B: NPT  
C: SAE  
D: BSP